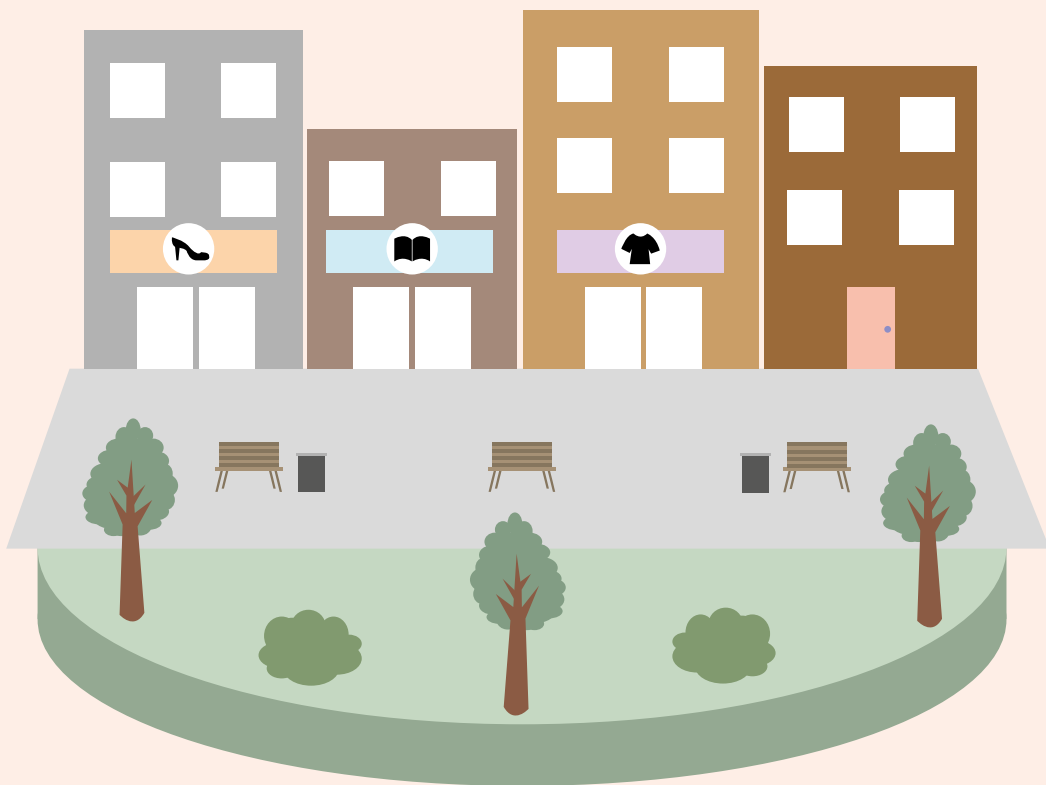


Reimagining the Purpose of Town Centres



Salford City Council

December 2024

Many Thanks To:

Salford City Council

Partners in Salford

**Salford Health and
Wellbeing Board**

**Julia Chapman, for writing
and designing the report**

**Sara Auty From SAZ MEDIA
for providing the photos for
this report**

Contents

Introduction	4
Why Do People Visit Town Centres?	6
The Groups	8
The Aims	9
The Older Women's Group	10
Young People Group	16
Disabled Adults Group	22
Yemeni Group	28
The Personas	34
The Problems	68
The Solution	80
- The Themes	82
- Green Spaces	84
- Safety	88
- Diversity	92
- Meeting Spaces	96
- Shelter	100
- Accessibility	104
Case Studies	108
Conclusion	126

Introduction

Town Centres have been a staple of British Society for centuries. With the ever-increasing rise of digitisation, town centres in the UK are going through rapid modernisation in order to keep up with the times. However, it can be seen that despite this, town centres up and down the country are in decline, drawing in fewer and fewer visitors every year.

This report will visually explore the problems people face in town centres preventing them from visiting and the possible solutions to make town centres all over the UK warm and inviting places for everyone. This report was created with reference to both Eccles Town Centre and Swinton Town Centre; however, the problems and solutions highlighted in this report can be applied to town centres all over the UK. It is hoped that this report can help to inspire not only change within town centres, but also change in the way we think about our towns and cities. Through true community-led involvement, this report will showcase how we can make town centres warm and welcoming places to be.

Reasons for visiting a town centre

To reimagine town centres, we need to consider the variety of reasons why someone would want to go to a town centre. We also need to recognise the increasing diversity of local communities.

1 Town centres can be places to create, nurture and sustain **social and community networks**, especially between people from diverse backgrounds.



2 Town centres can offer people **food and drink**, as well as **toilets** and changing places. In light of climate breakdown, greener/bluer town centres could provide people with **shelter**, shade or warmth.



3 For some people, their **homes** will be within town centres, possibly complemented by other forms of accommodation.



4 Economically, as well as more traditional places of **economic exchange**, town centres could be places of more diverse **work** opportunities, whether independent business, self-employment or employment.



5 Focal points for **travel** are likely to be within town centres. These are likely to include: walking; cycling; bus; tram; railway; and possible waterways.



6 Town centres can offer a range of **leisure** and **learning** opportunities. These include play and fun, physical activity, heritage, tourism and culture.

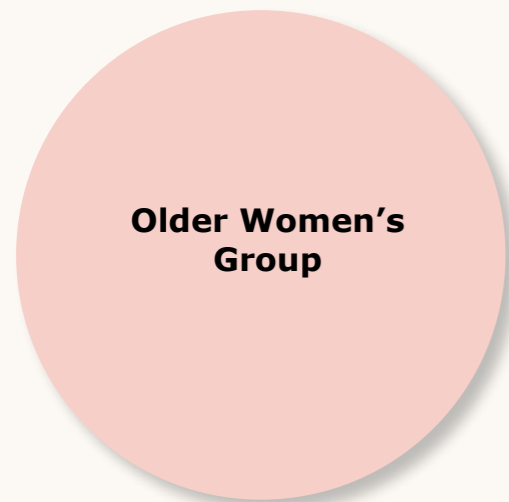


7 There are increasing opportunities for town centres to host **public services**, such as health and social care, education, and finding work.



The Groups

The collective consists of 4 diverse groups representing both Swinton and Eccles town centres (two groups per town centre). Each group met regularly each week for 4 consecutive weeks to discuss the current problems they face with their local town centres and to produce some solutions to make them better. These groups were:



The Aims

1 To establish who currently resides in Eccles and Swinton, thus portraying a realistic demographic.

To highlight the current problems that residents in each group face that prevent them/dissuade them from visiting to their town centre.

2

3 To come up with solutions that would encourage and entice each group to visit their town centre.

The Older Women's Group

Town Centre: Swinton

- The women live in a co living space in Swinton and have seen the way that the town centre has changed over the years, often talking in dismay about the town centre of today.
- Each person volunteers regularly at the Humphrey Booth Day Centre.
- They are a tight knit of down to earth women who care about each other and who want to see the town centre thriving once again.
- They discussed how there is a lack of variety in the town centre for them which makes going there not worth it.
- They highlighted the need for regular maintenance and cleaning of the town centre, talking about how the current town centre lacked cleanliness and facilities. This often contributes to the town centre looking depressing.



“We want people to be happy in the town centre.”





“We want a proud town centre.”





“We want somewhere to share our skills.”



Young People Group

Town Centre: Eccles

- The group consisted of a mix of young people, ranging in age, within Eccles
- They often talked in disappointment about their local town centre, oftentimes highlighting how it isn't safe for them, especially for those that are people of colour and those who identify as LGBTQ+.
- The town centre was often talked about as a transfer point rather than a destination.
- They highlighted the need for the town centre to adapt to younger audiences in order to become a place to be.

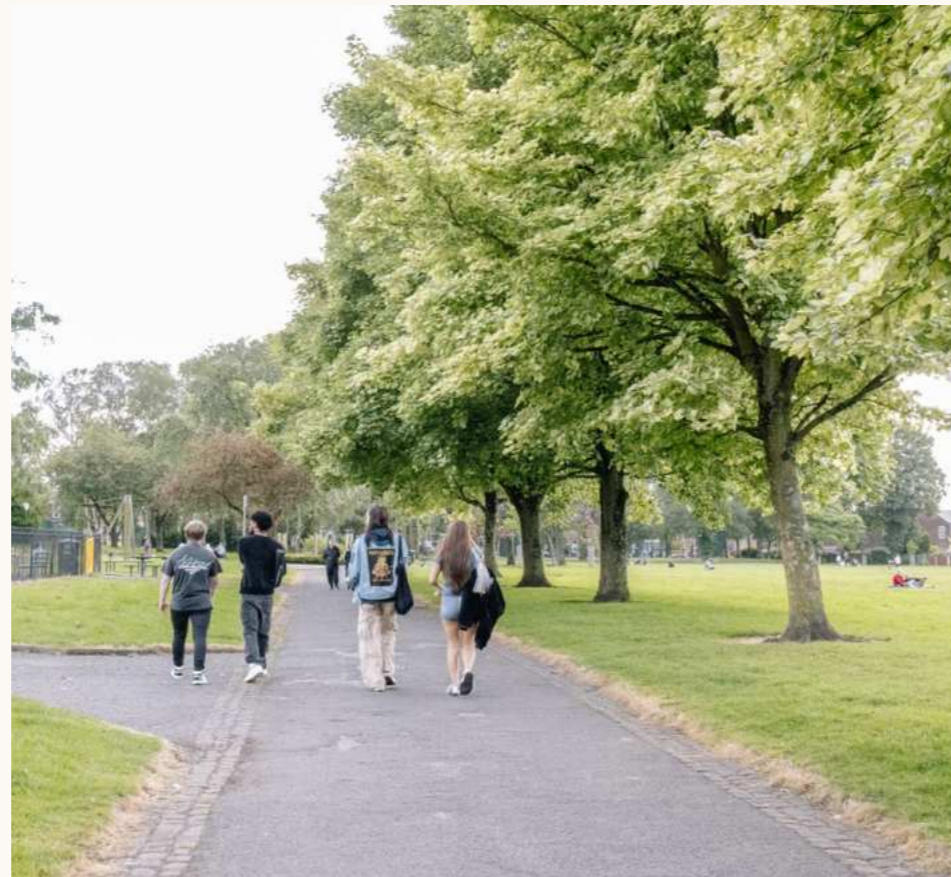


“We want a place to appeal to a younger audience.”





“We want a place to be.”





“We want things to last and people to visit.”



“We want a place with a vibe.”



Disabled Adults Group

Town Centre: Swinton

- The group consisted of several members, ranging in age and disability, all being non-verbal.
- They are situated in a care facility in Swinton.
- With the help of their carers, they were able to express their opinions on the town centre through the use of photos and images.
- Most of the adults expressed their happiness to go out and about, however this was contrasted with the difficulty of them accessing the town centre due to different reasons.
- The carers often explained the need for a hub for them in the town centre if they were to go out. This would help to offload stress and to act as a base if they were to stay out for longer periods of time.



“We want a place to go out”





"We want more open spaces"

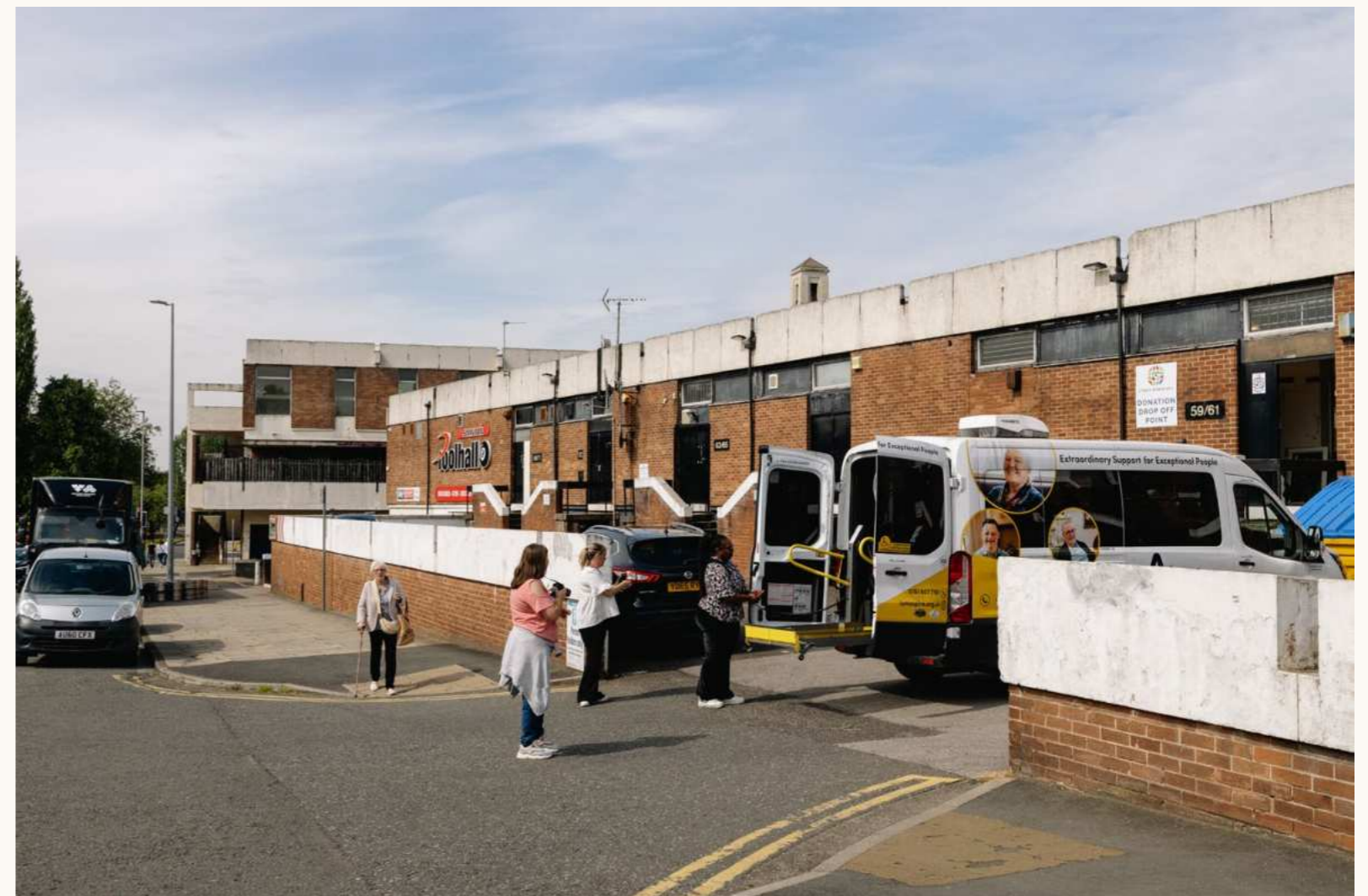




“We want accessible spaces”



“We want places to meet up.”



Yemeni Group

Town Centre: Eccles

- The group consists of Yemeni men, varying in age who are situated around Central Eccles.
- They often talked in dismay about the local town centre, highlighting the fact that they barely go there as in the past them and their families have received racial abuse from people there.
- Within the sessions, it was shown that the main hub for the group was beyond the town centre on Liverpool Road, housing not only multicultural shops and places to meet, but also the main Mosque that they attended.
- They highlighted the need for more multicultural business, stating they didn't know anyone from their culture who owns a business.
- They explained how food brings people together and how that could play a vital role in the town centre.



“We want safe spaces.”



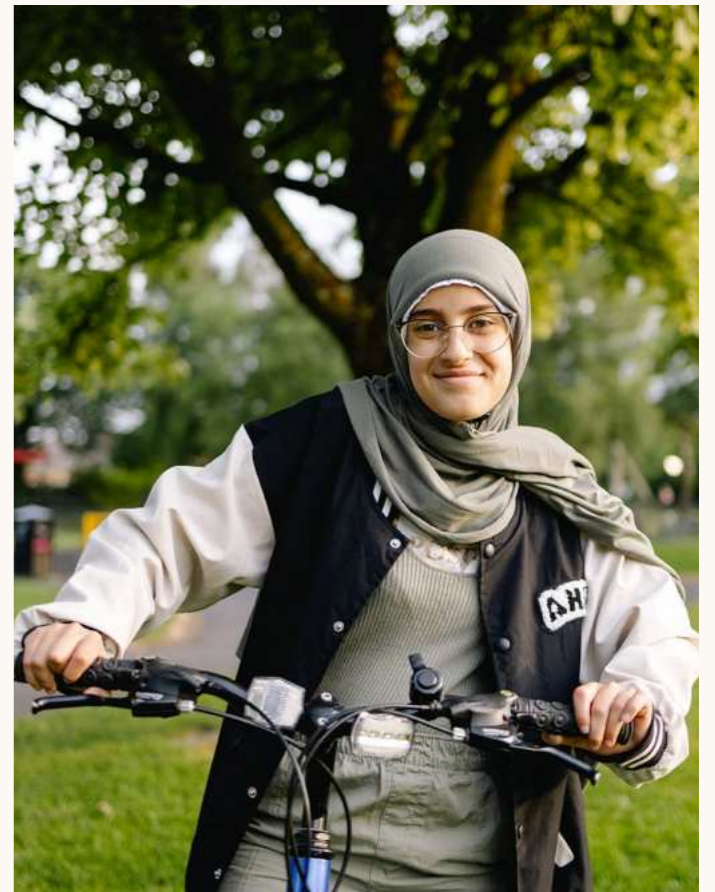


“We want more meeting spaces.”





“ Physical and mental well-being needs more importance.”



“We want local businesses.”

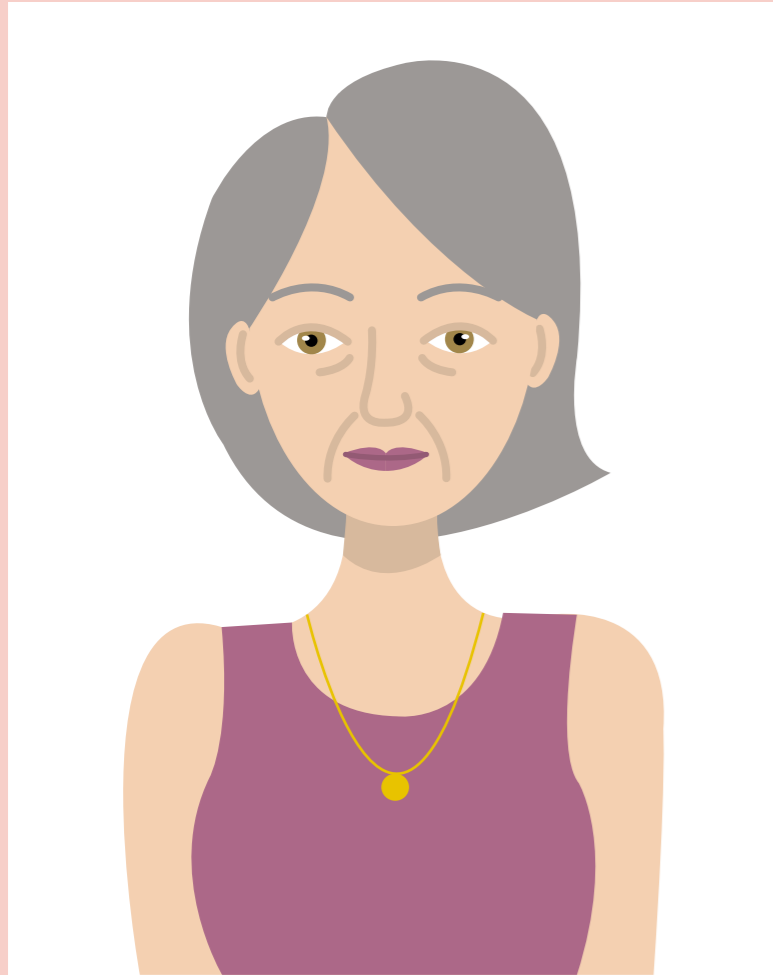


The Personas

Who resides in Swinton
and Eccles?



Victoria



Age: 70

Location: Pendlebury

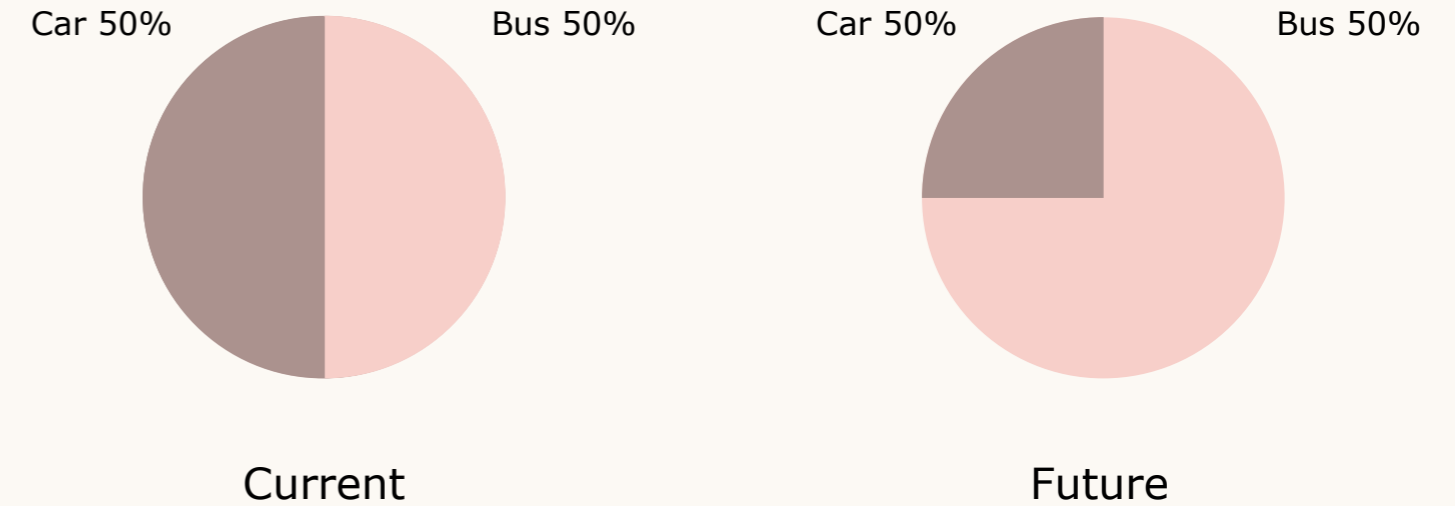
A bit about me:

- I have a sweet personality.
- I volunteer.
- I am a happy person.
- I have been recently divorced.
- I have 3 adult children.
- I like to socialise.
- I am a dancer.
- I have a dog called Gailin and a cat called Poppy.

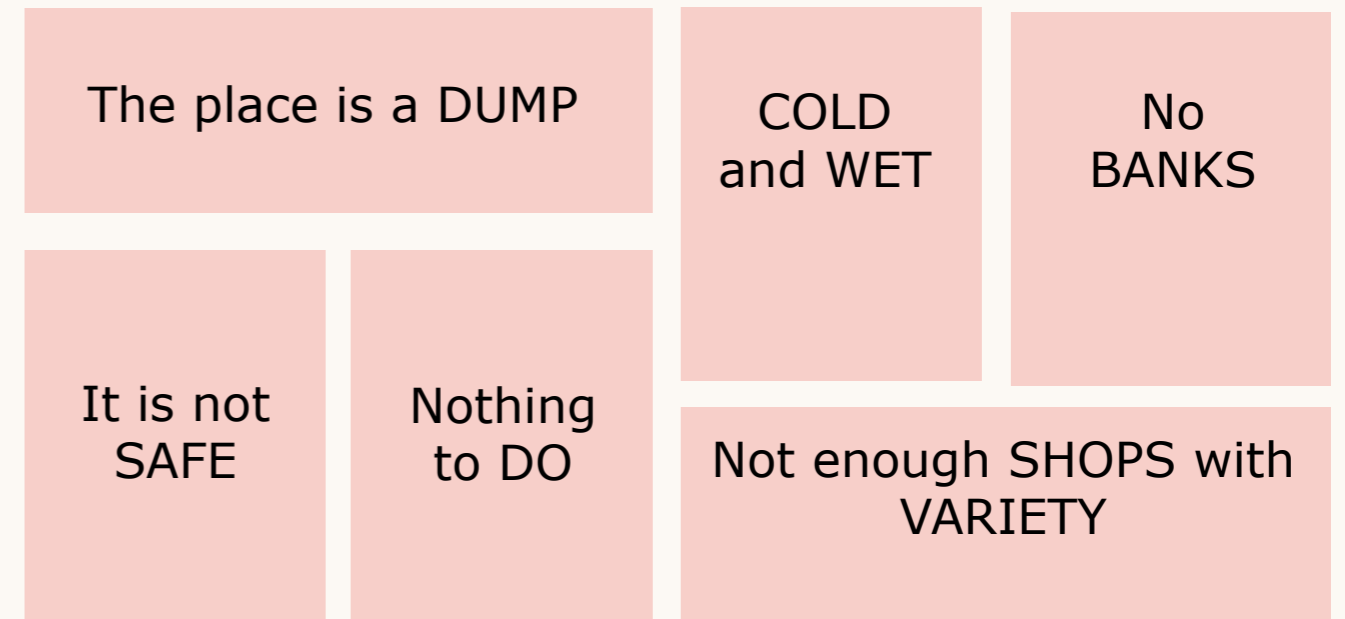
What Matters the Most to Me:



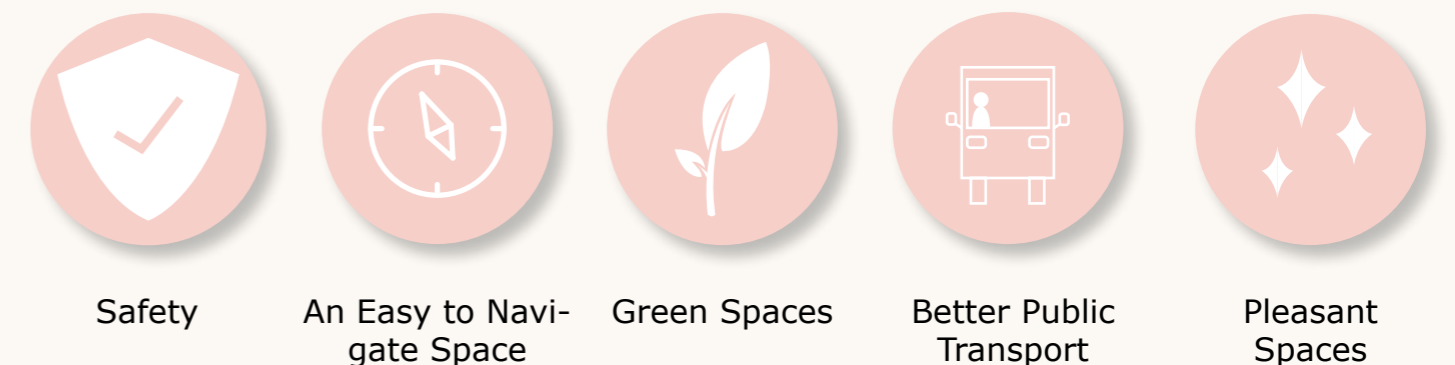
Transport I Use and Would Like to Use



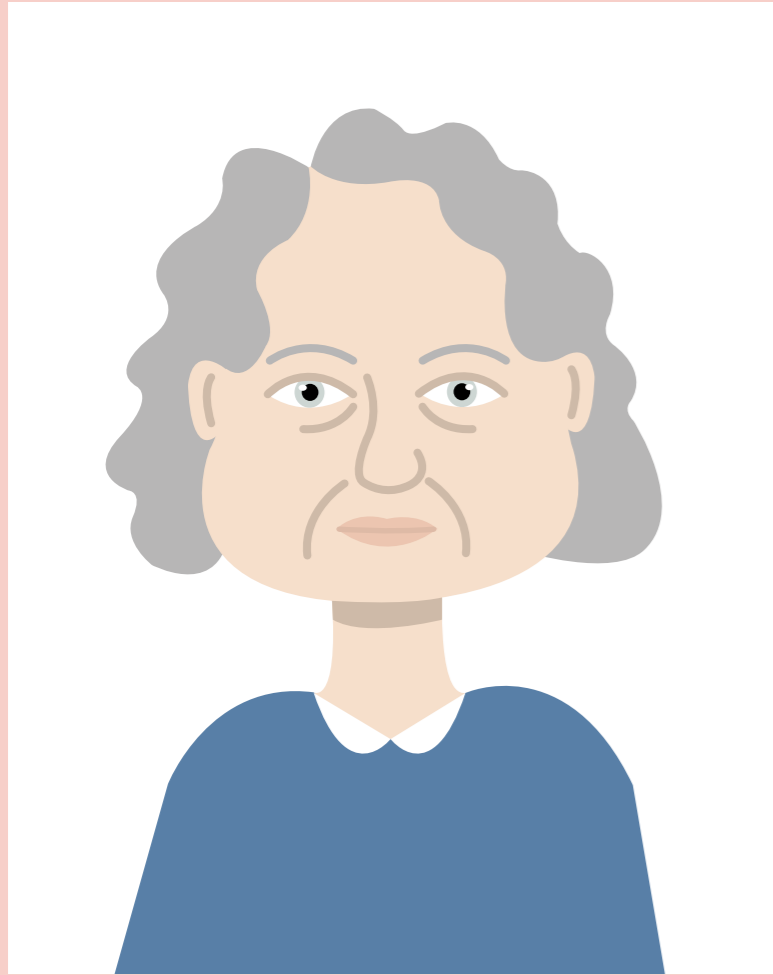
Barriers I Face with the Town Centre



My Hopes for the Future



Gladys



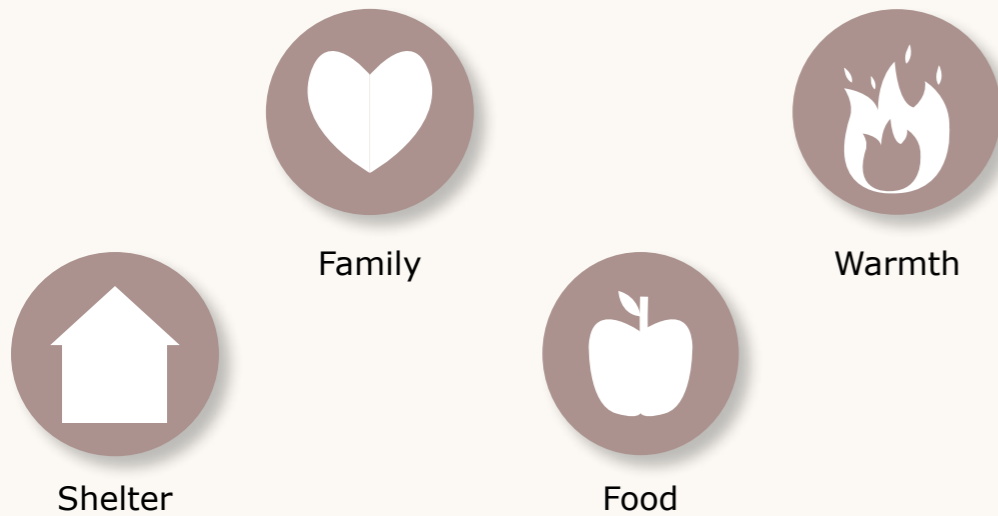
Age: 72

Location: Worsley Road

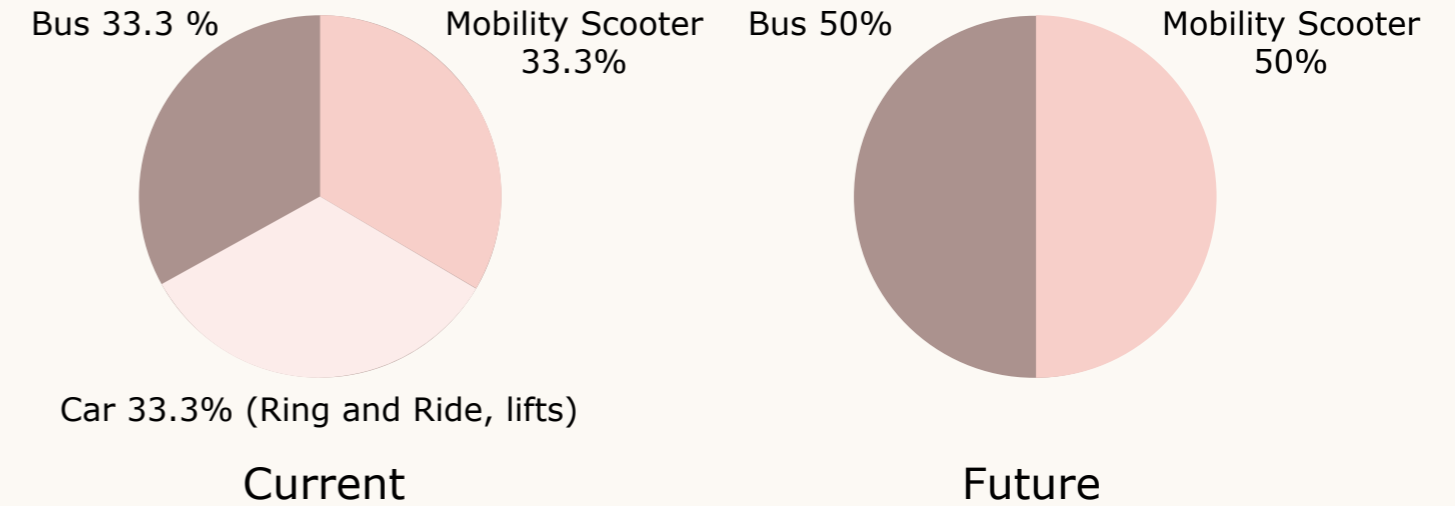
A bit about me:

- I have had a hard life.
- I feel isolated after my accident.
- I have family but don't live with them.
- I don't have any friends and so that makes me feel lonely.

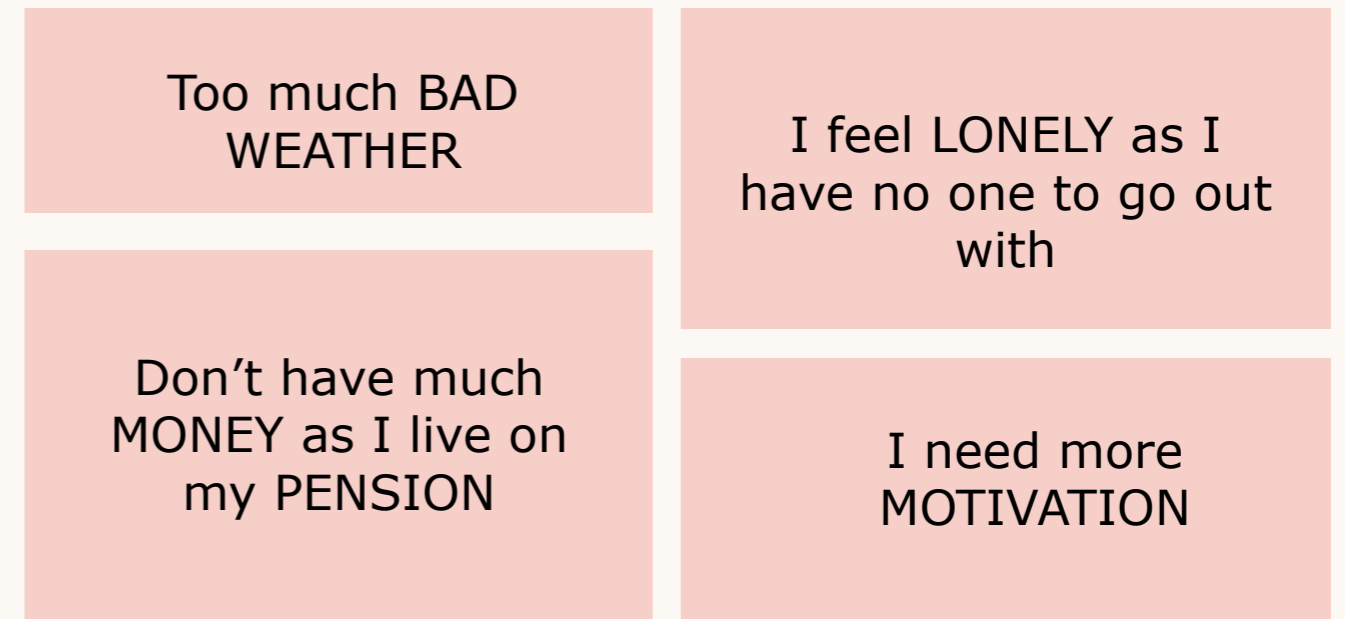
What Matters the Most to Me:



Transport I Use and Would Like to Use



Barriers I Face with the Town Centre



My Hopes for the Future



Dora



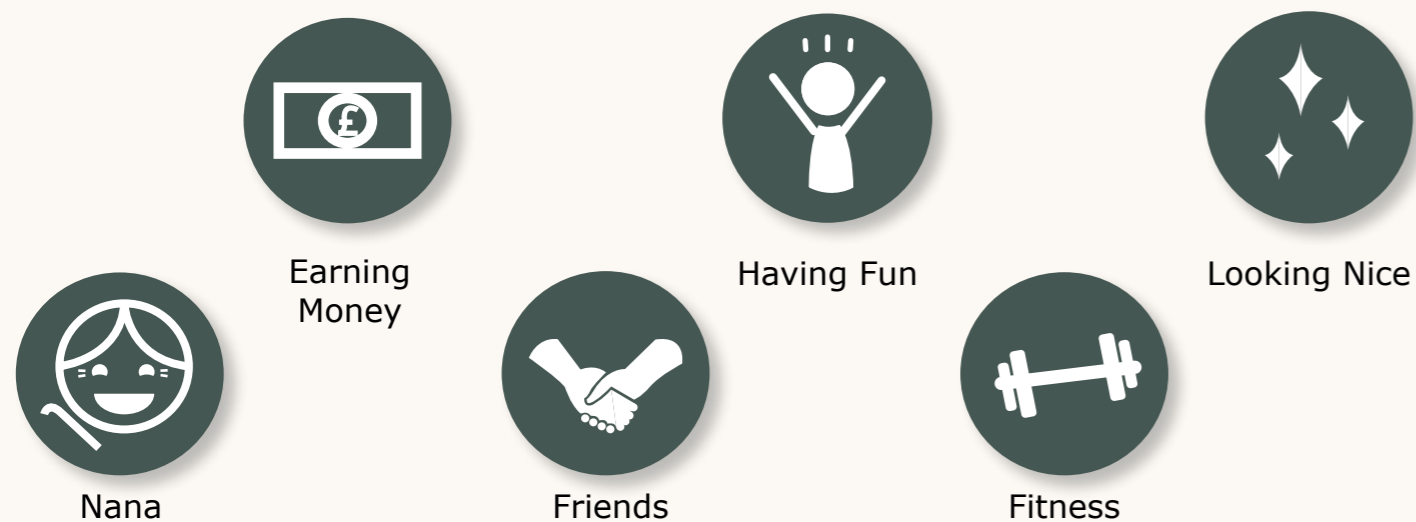
Age: 21

Location: Patricroft

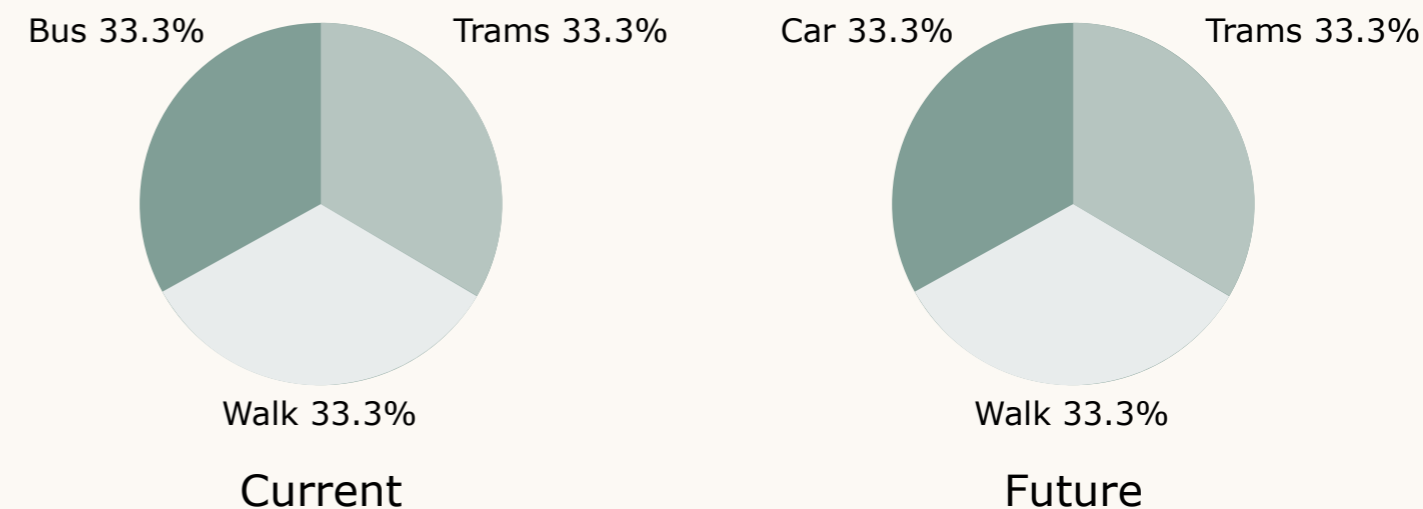
A bit about me:

- I am mixed race.
- I have a friendly/ bubbly personality.
- I have ADHD.
- I currently work part time, but struggle to hold secure a job that interests me.
- I enjoyed art at school but dropped out of college.
- I moved out at 19 due to family problems.

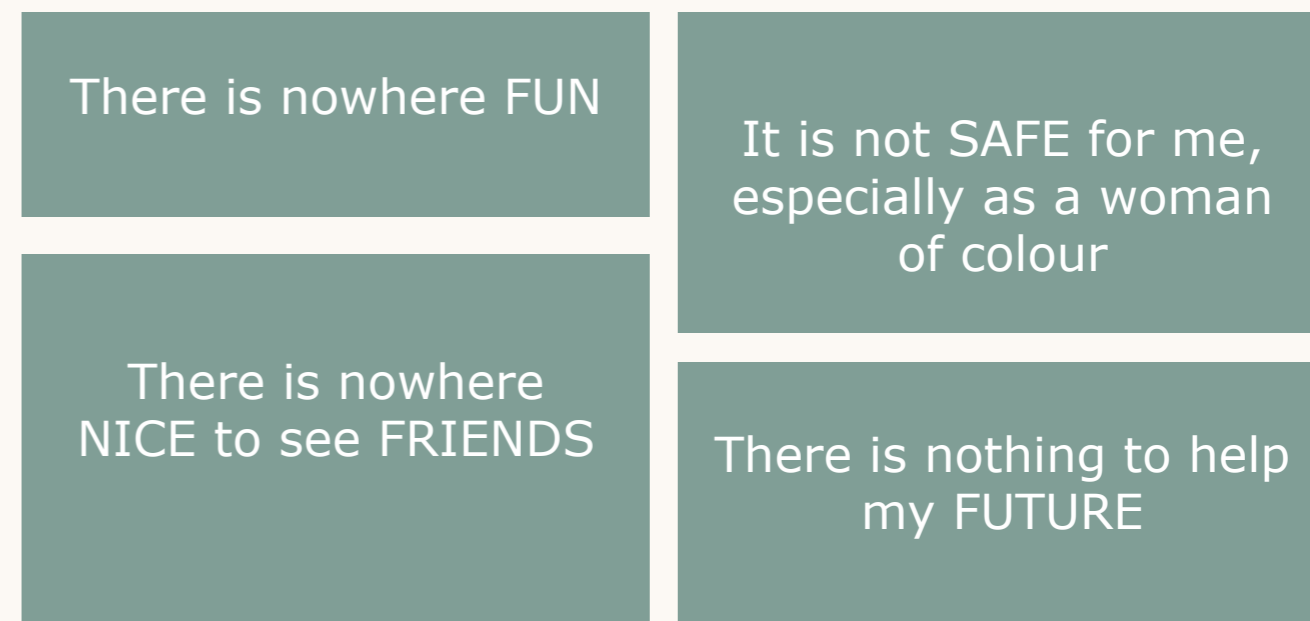
What Matters the Most to Me:



Transport I Use and Would Like to Use



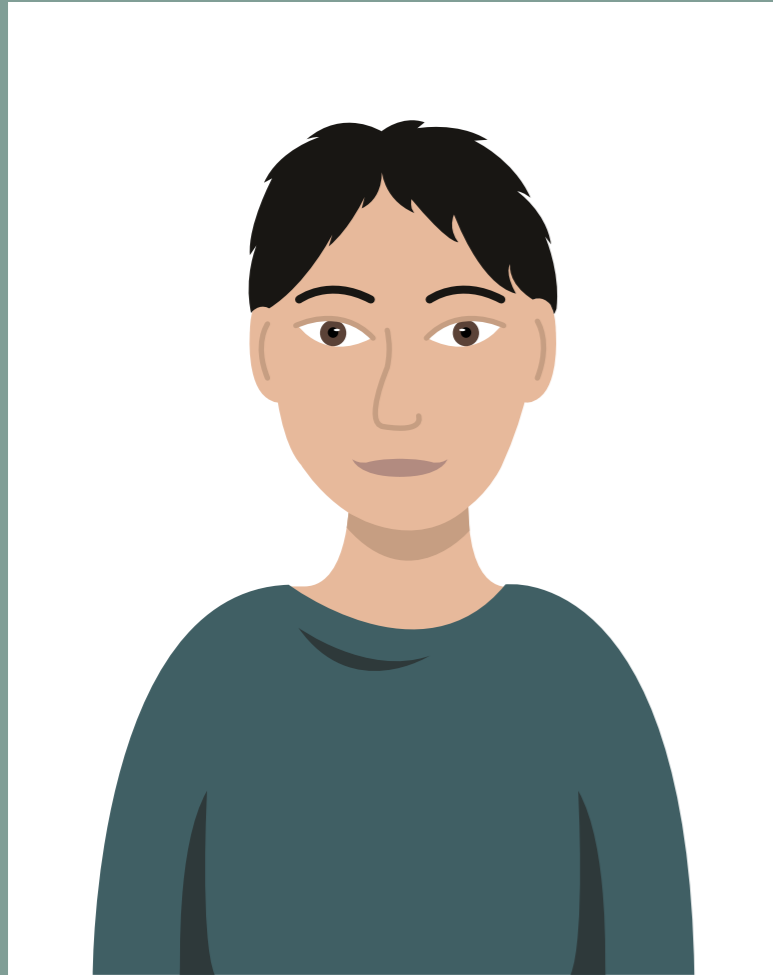
Barriers I Face with the Town Centre



My Hopes for the Future



Sam



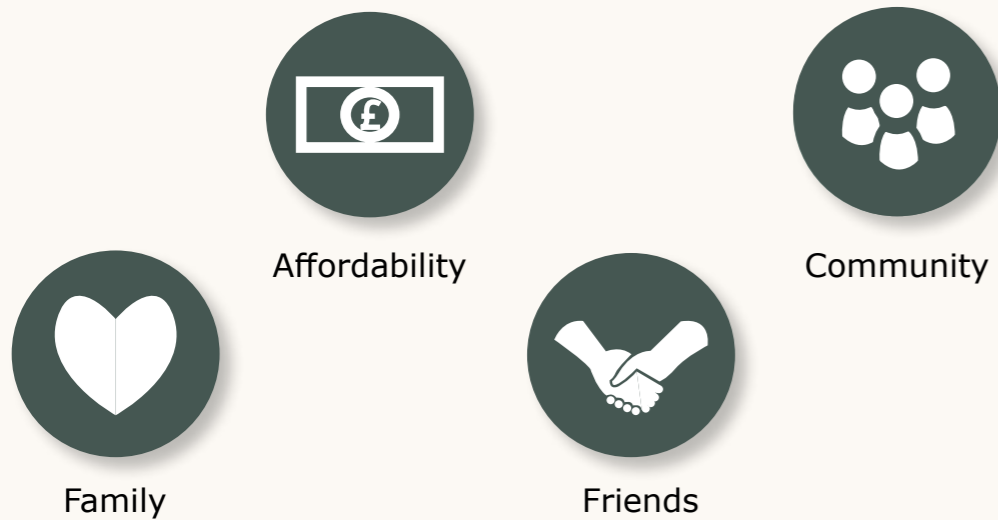
Age: 25

Location: Eccles Centre

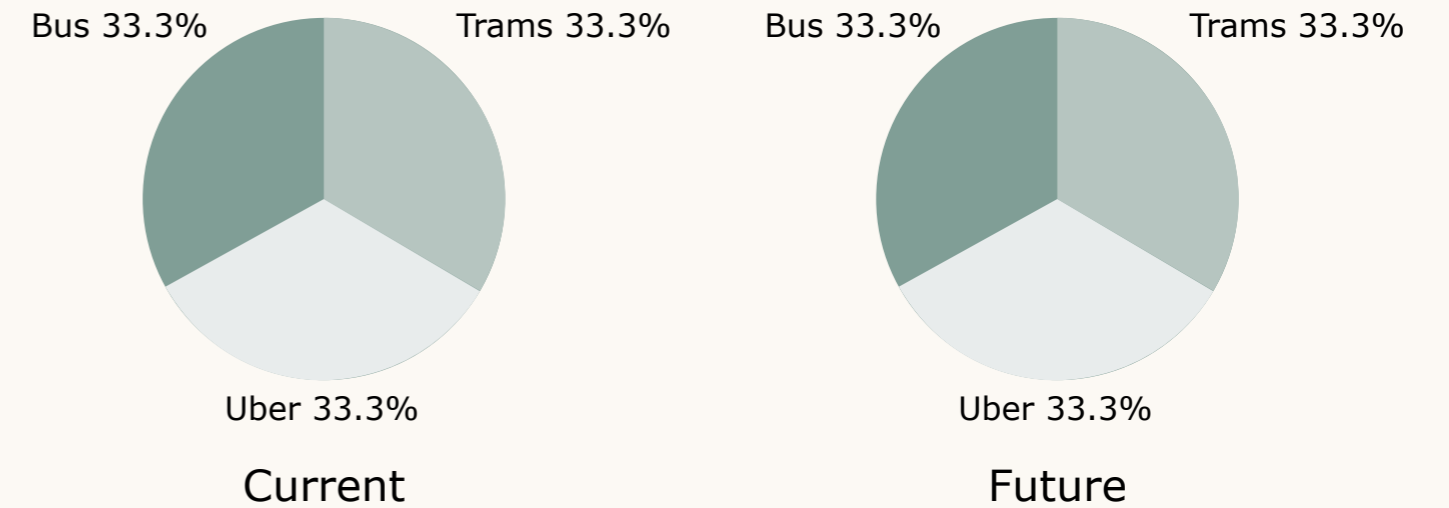
A bit about me:

- I come from a working class background.
- I am sociable and like to hang out with friends.
- I use public transport.
- I like to go to the gym.
- I see my family on special occasions.

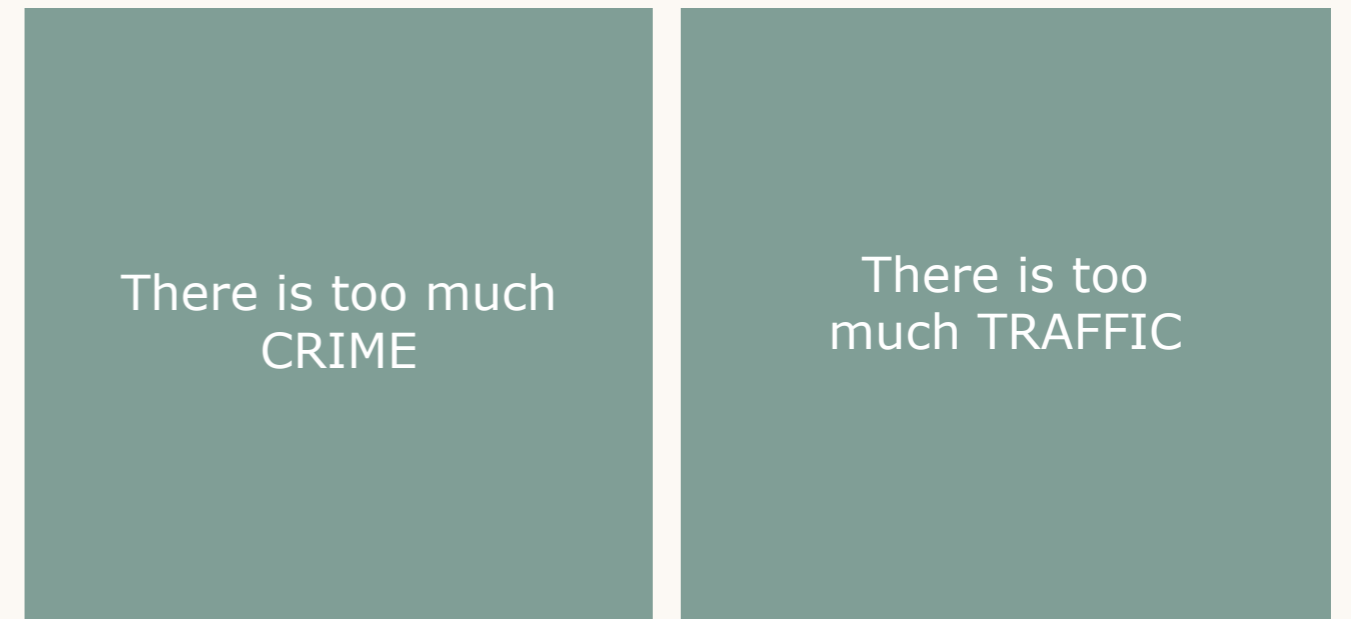
What Matters the Most to Me:



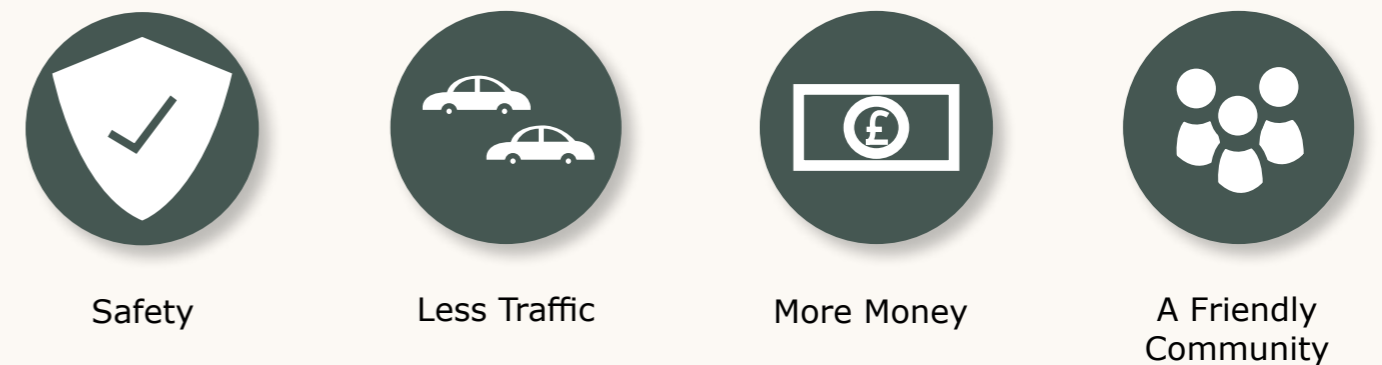
Transport I Use and Would Like to Use



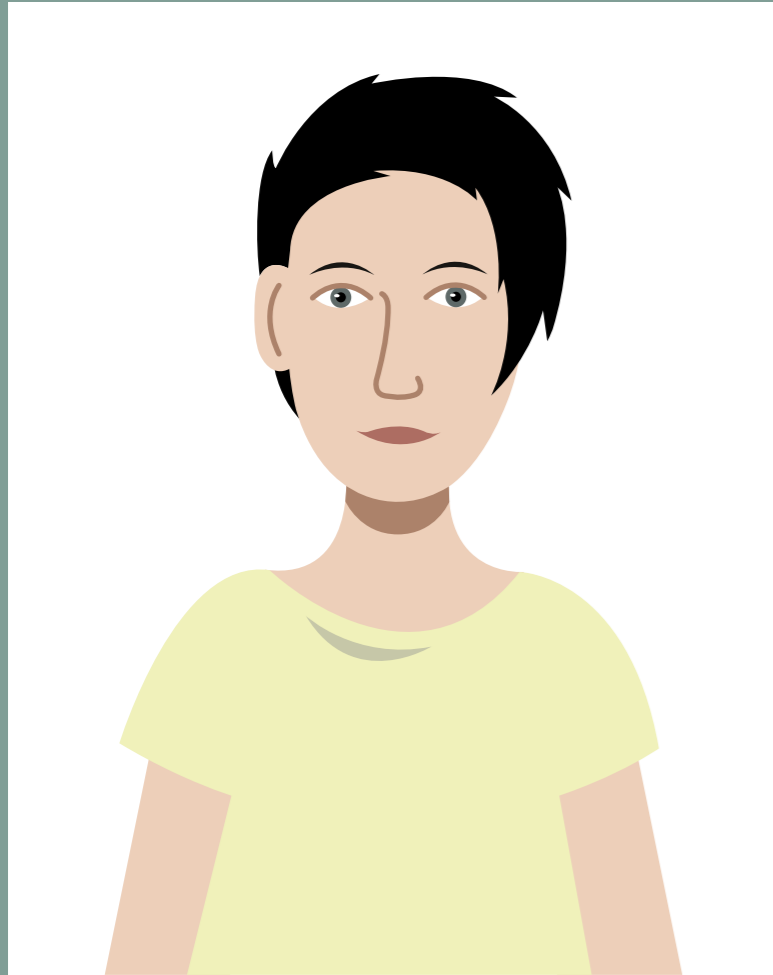
Barriers I Face with the Town Centre



My Hopes for the Future



Arther



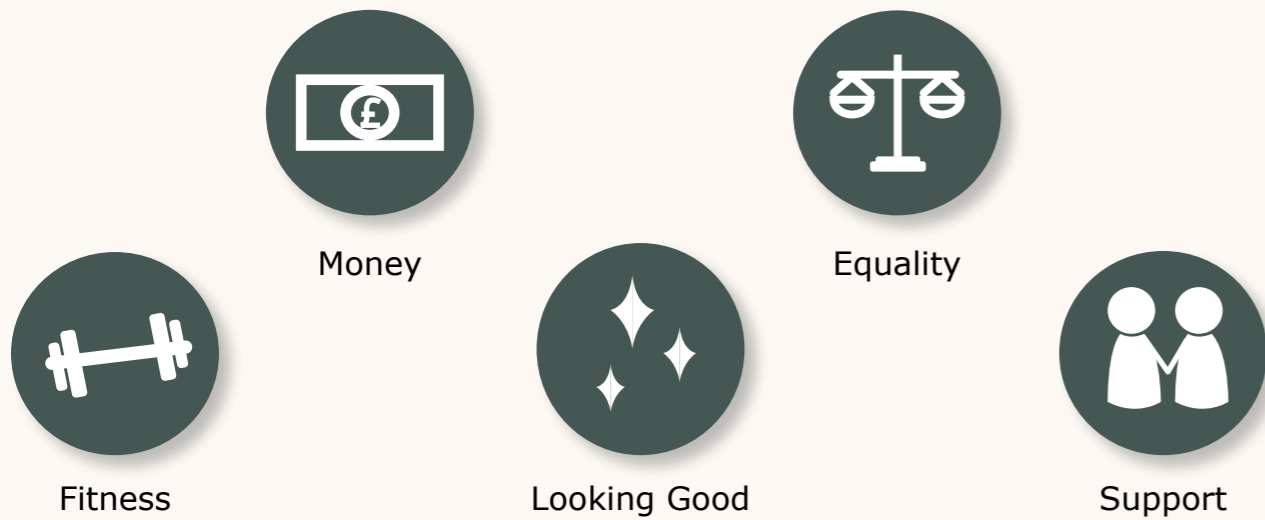
Age: 20

Location: Eccles Centre

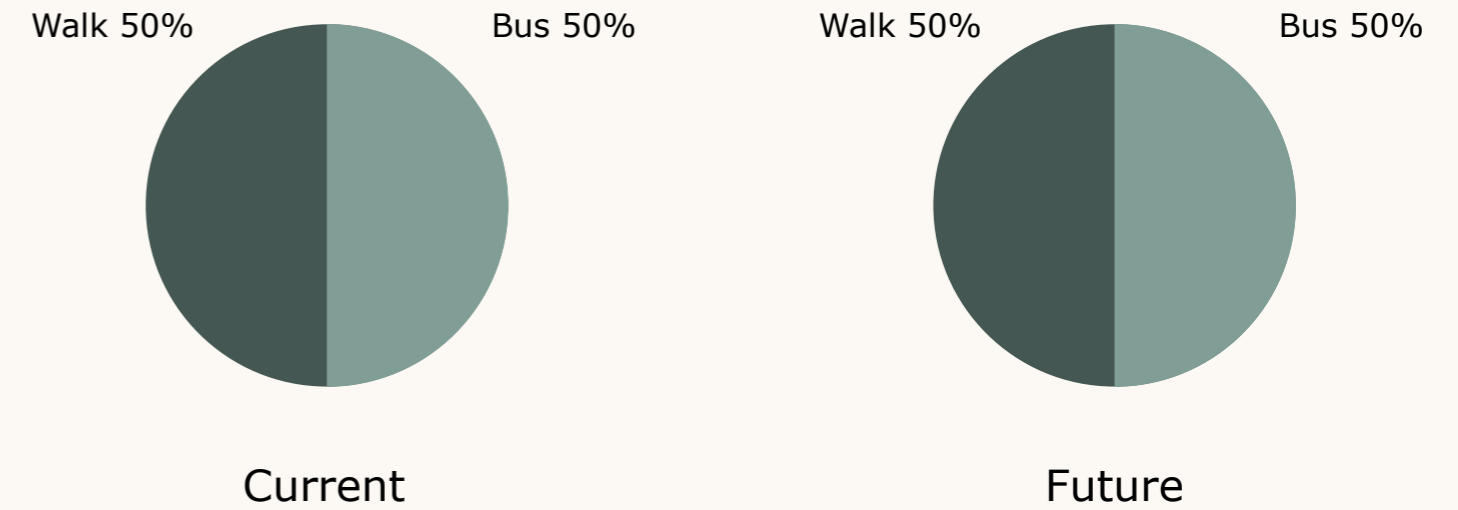
A bit about me:

- I recently moved to the UK to find work.
- I am transgender.

What Matters the Most to Me:



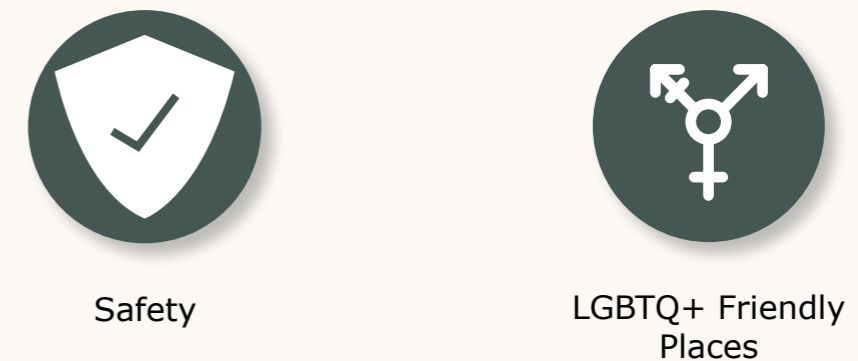
Transport I Use and Would Like to Use



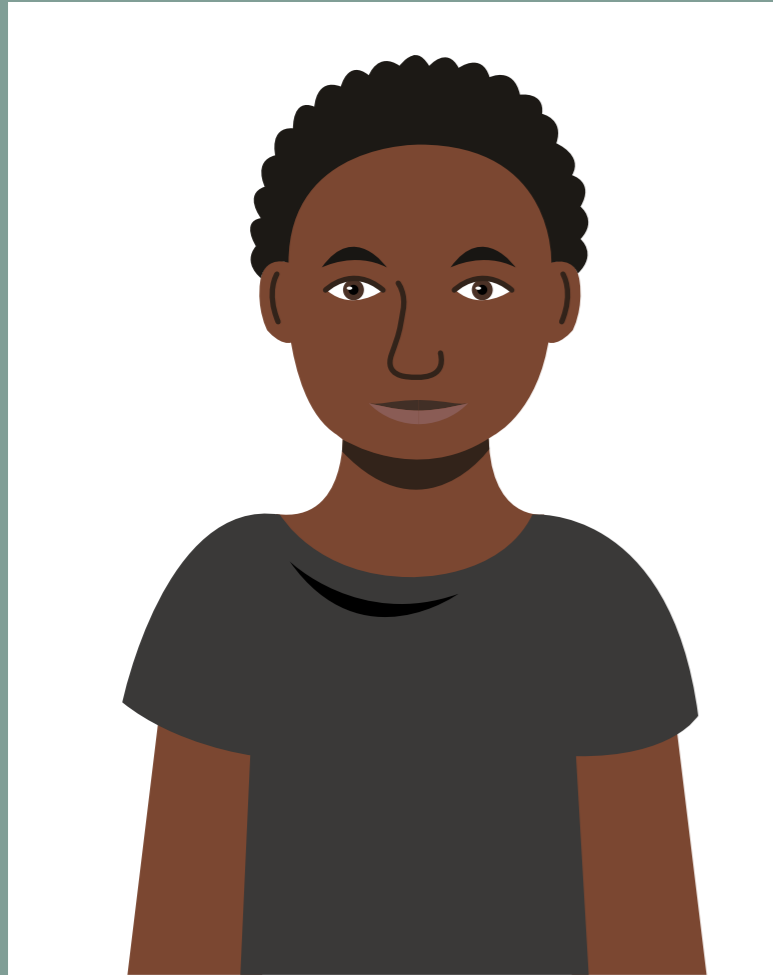
Barriers I Face with the Town Centre



My Hopes for the Future



Kyle



Age: 17

Location: Eccles Town Centre

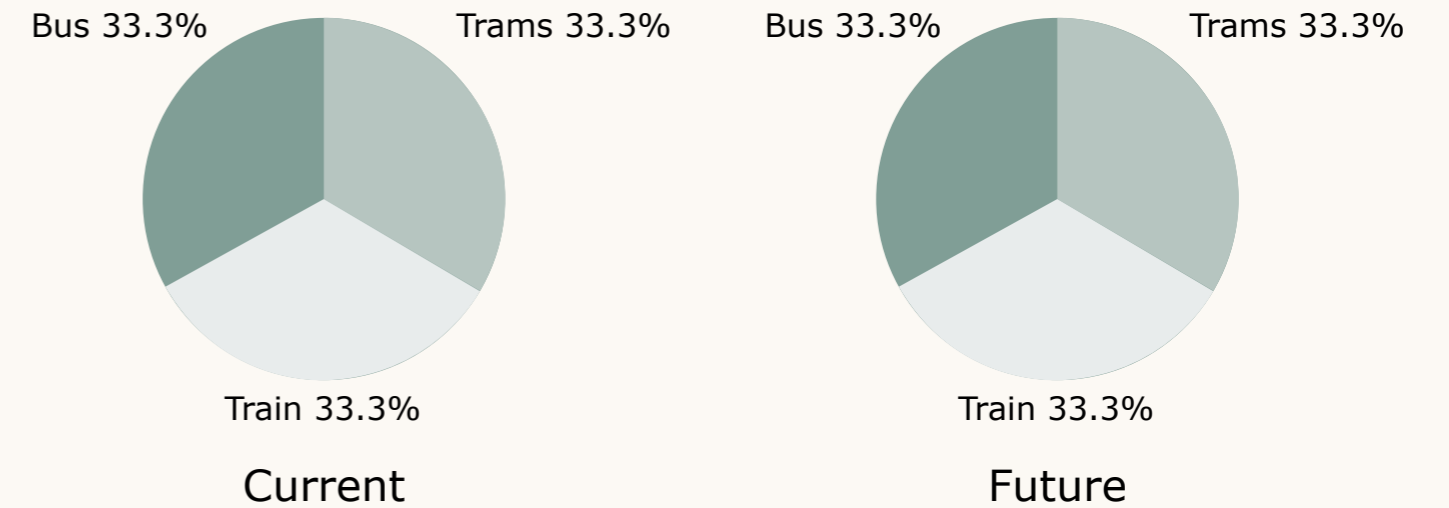
A bit about me:

- I live with my parents.
- I work at the local corner shop.
- I earn minimum wage.

What Matters the Most to Me:



Transport I Use and Would Like to Use



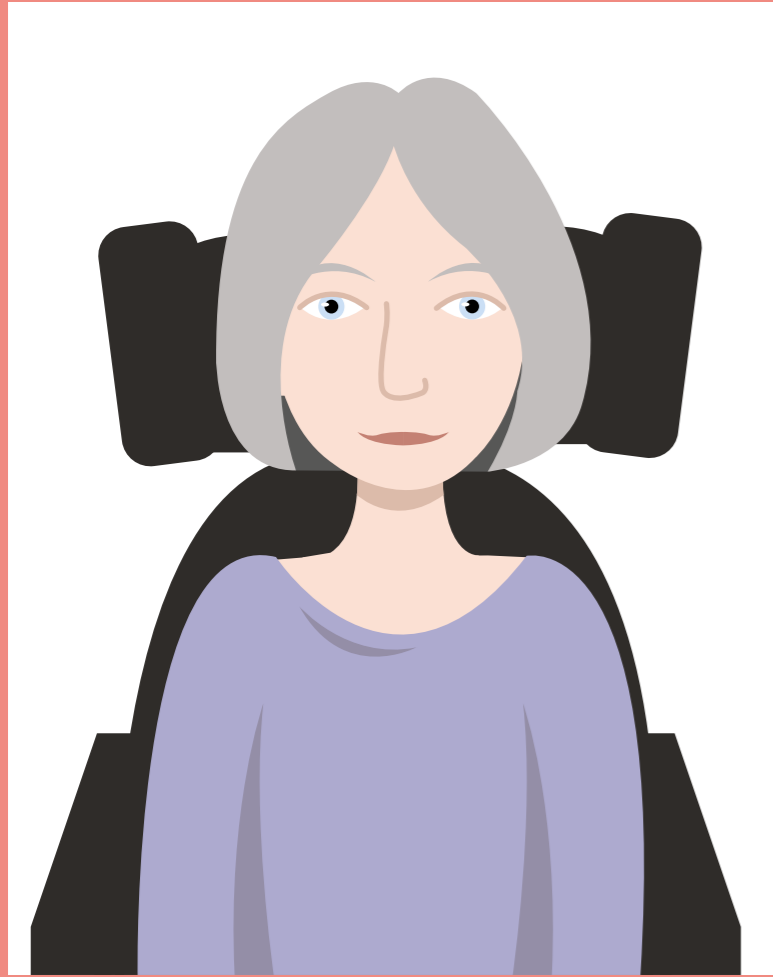
Barriers I Face with the Town Centre



My Hopes for the Future



Julie



Age: 63

Location: Pendlebury

A bit about me:

- I have an acquired brain injury.
- Since the injury my life has changed dramatically.
- I require full support in all areas of my life.

What Matters the Most to Me:

Real Friends

Sensory (Light and Cinema)

My Independence

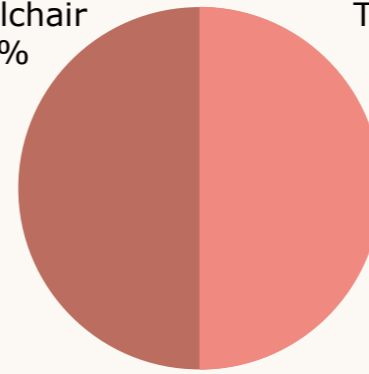
The Quiet

Being on My Own

Reading

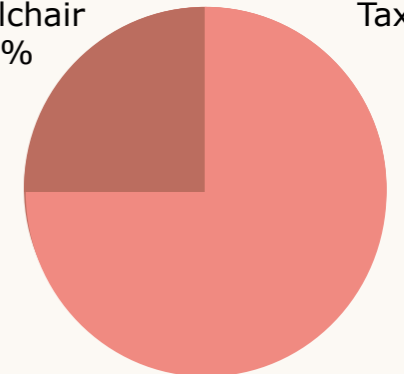
Transport I Use and Would Like to Use

Wheelchair 50% Taxi 50%



Current

Wheelchair 25% Taxi 75%



Future

Barriers I Face with the Town Centre

INACCESSIBLE PAVING (not wide enough)

OVER-GROWN foliage

No HOIST or TURN TABLE in toilets

Paving slopes TOO HIGH

Disgusting TOILETS

No AUTOMATIC DOORS

My Hopes for the Future

Trimmed Back Foliage

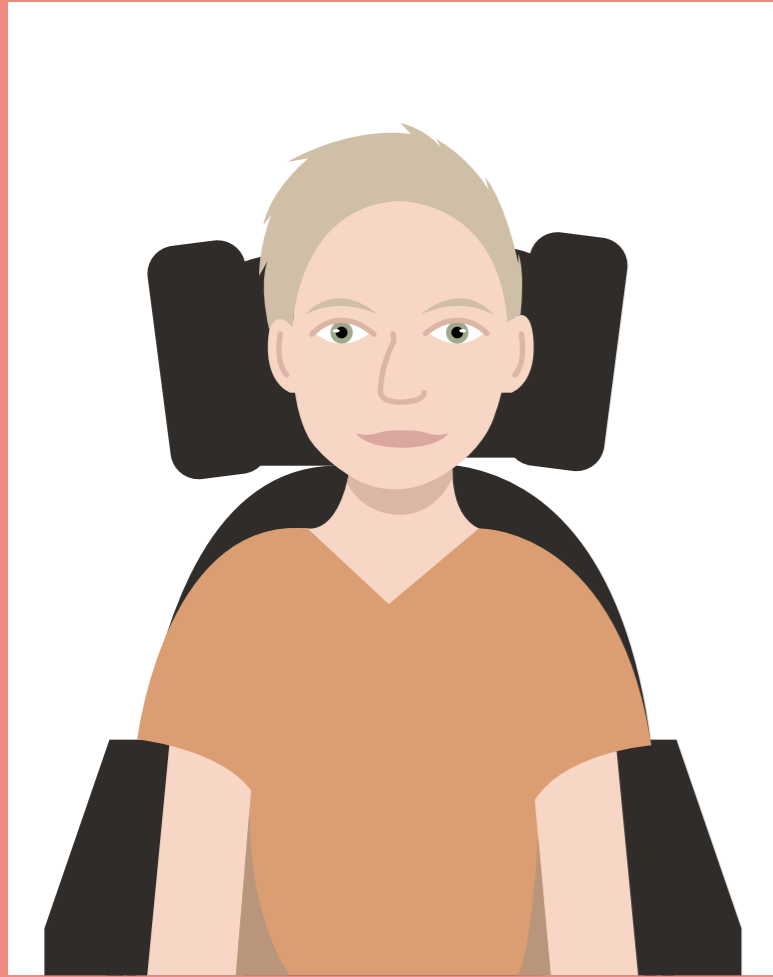
Automatic and Wider Doors

Meeting Spaces

Accessible Toilets and Paving

Safe Pick Up and Drop Off Points

Paul



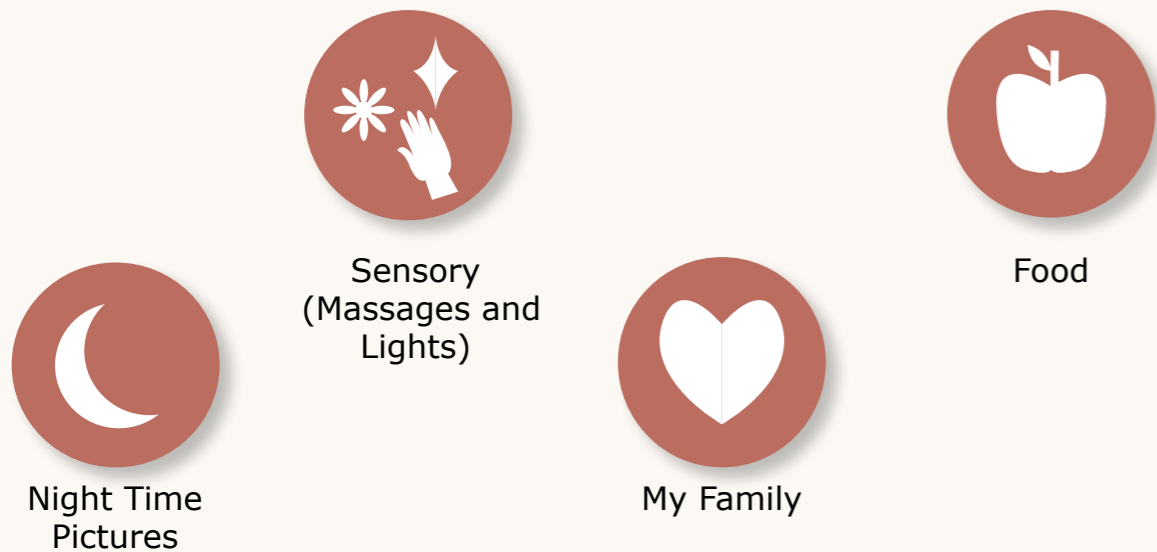
Age: 39

Location: Wardley

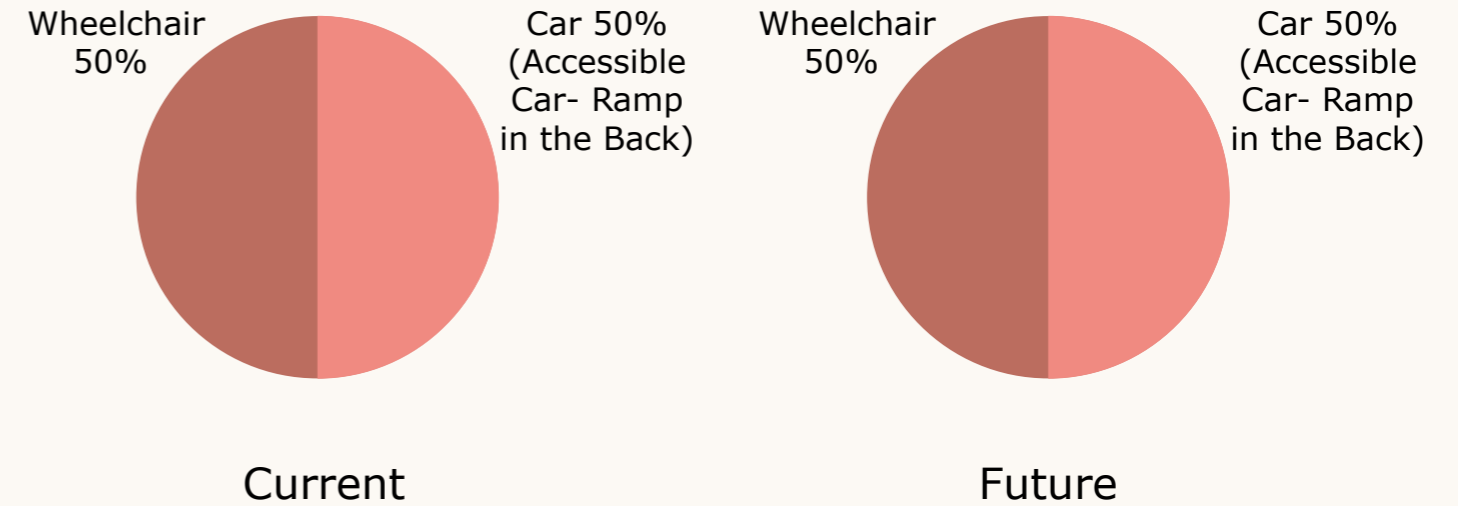
A bit about me:

- I have learning and physical disabilities.
- I live with my family.
- I am a part of a large family, but currently live with my dad.
- My dad is my carer- I rely on him to get out and about.
- I am visually impaired.
- I have epilepsy.

What Matters the Most to Me:



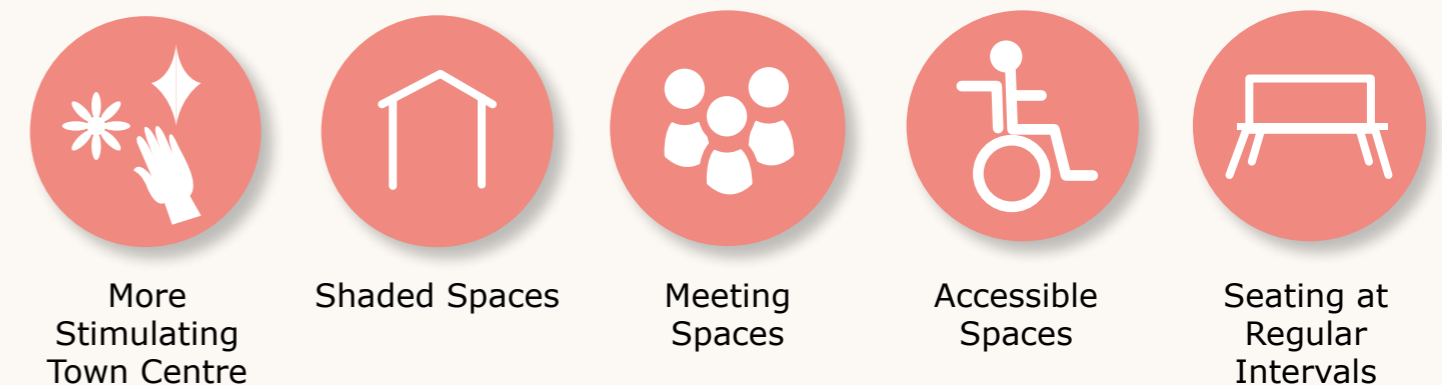
Transport I Use and Would Like to Use



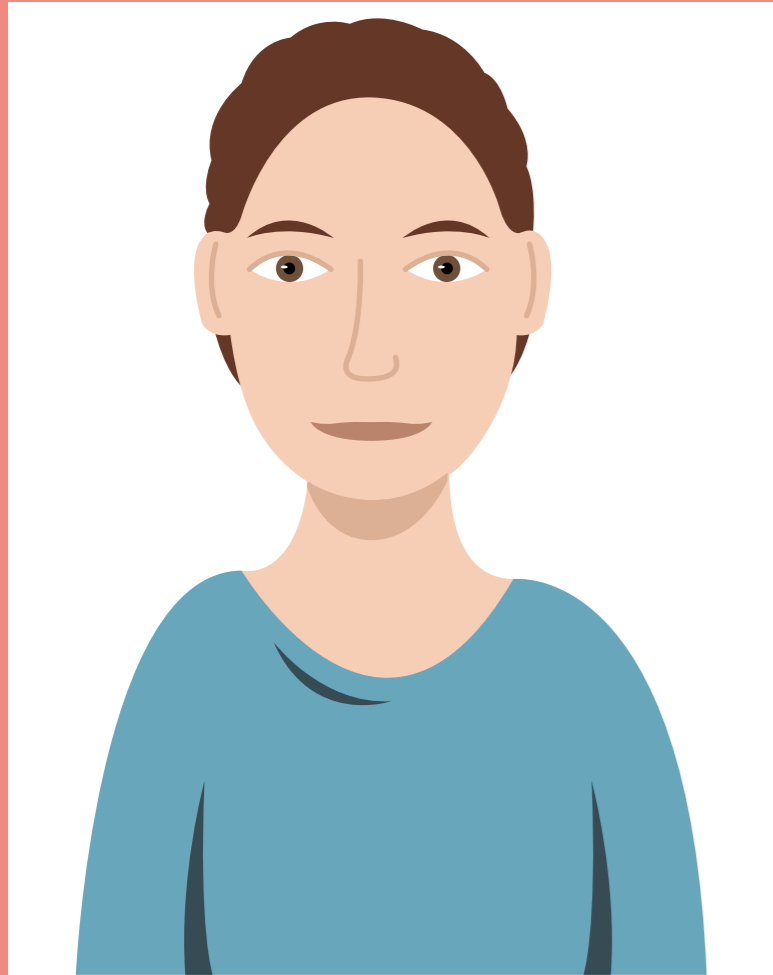
Barriers I Face with the Town Centre



My Hopes for the Future



Dale



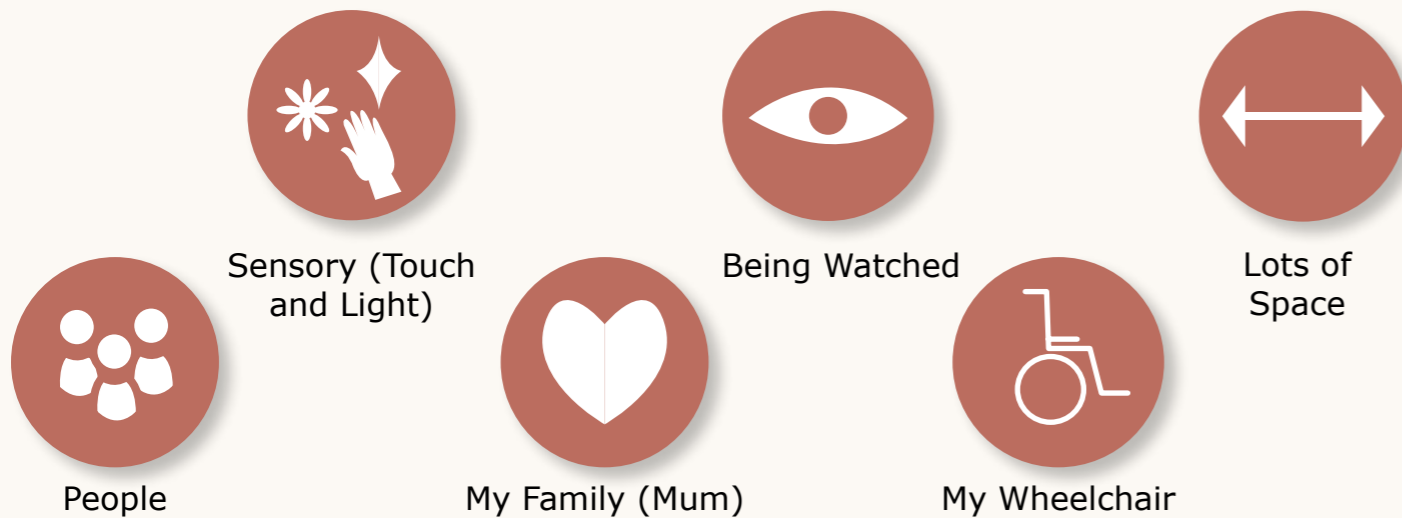
Age: 27

Location: Swinton Centre

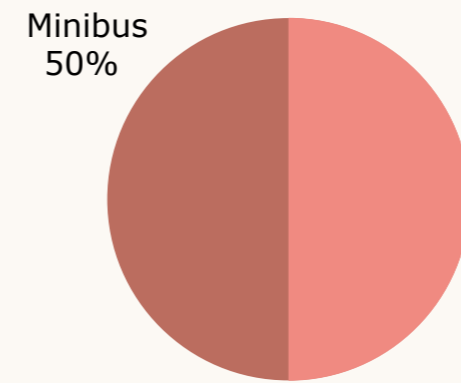
A bit about me:

- I have a learning disability.
- I like interaction.
- I am very bubbly and friendly.
- I like to chat.
- I don't like to sit still.
- I need space to move around.
- I am visually impaired.
- I live in shared accommodation.

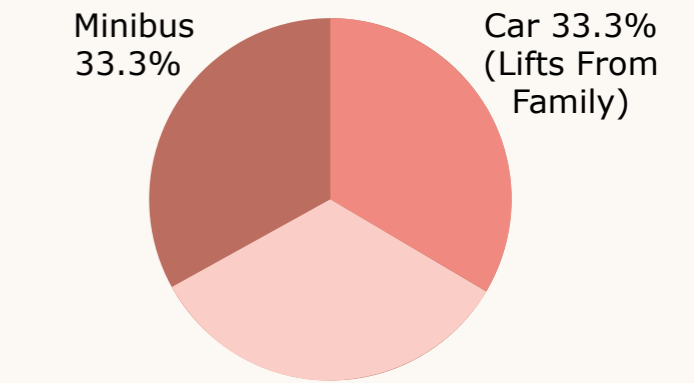
What Matters the Most to Me:



Transport I Use and Would Like to Use



Current



Future

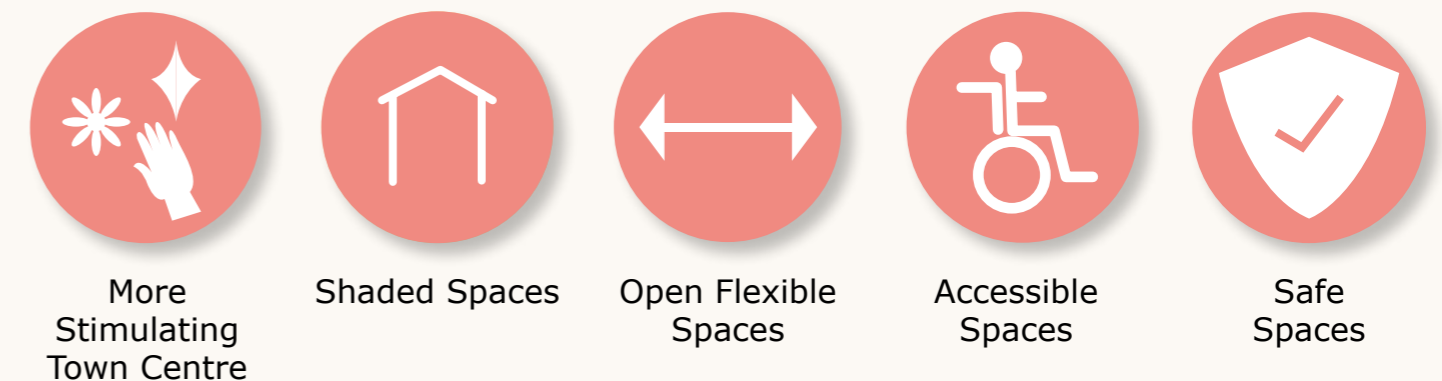
Barriers I Face with the Town Centre

I need a BIGGER SPACE

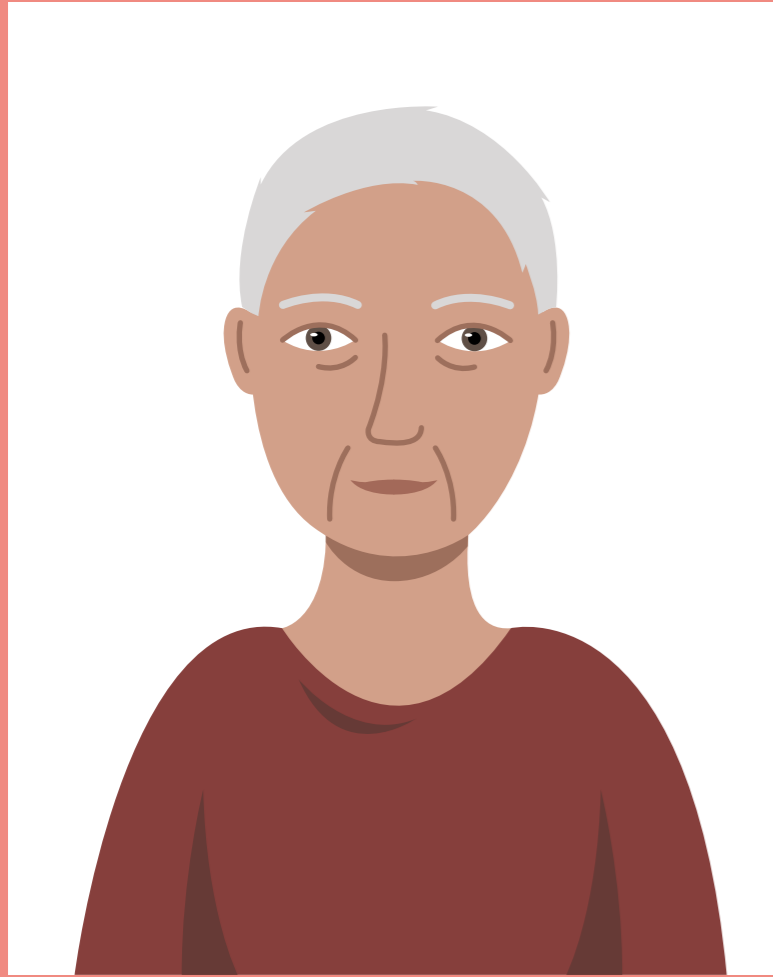
It takes me long to get SETTLED in the CAR

It is NOT SHADED enough (I have increased sun sensitivity due to my medication)

My Hopes for the Future



Jason



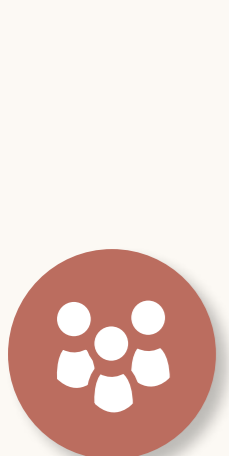
Age: 68

Location: Clifton

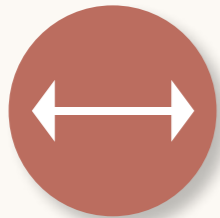
A bit about me:

- I have a mild learning disability.
- I like to go out.
- I like to watch the world go by.
- I like to walk.

What Matters the Most to Me:



Community



Lots of Space

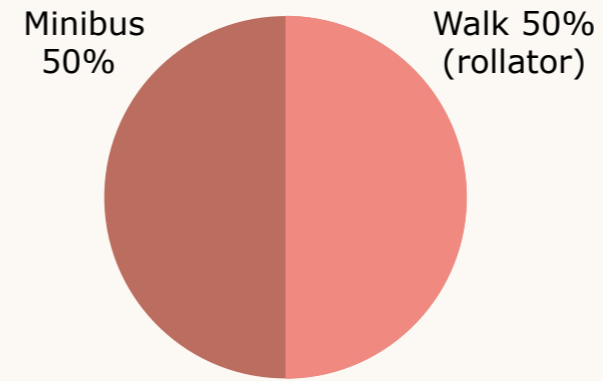


My Rollator

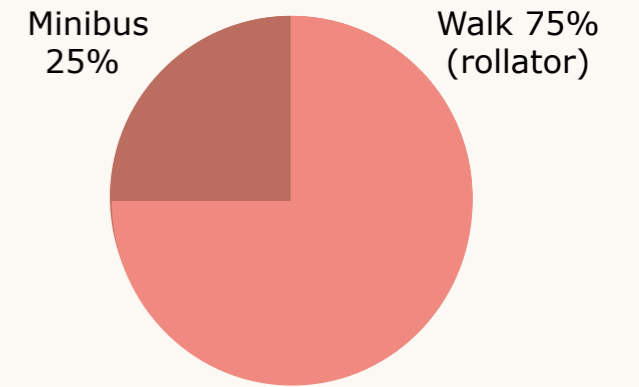


Watching The World Go By

Transport I Use and Would Like to Use



Current

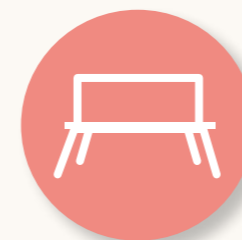


Future

Barriers I Face with the Town Centre

INACCESSIBLE PAVING (cracks and textures)	No one to MONITOR toilets	No HOIST in toilets
No GRAB RAIL in toilets	Disgusting TOILETS	No VOLUNTEER DRIVERS to take me to town centre

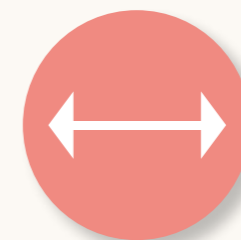
My Hopes for the Future



Seating at Regular Intervals



Socialising Spaces



Open Spaces



Accessible Toilets and Spaces



Safe Spaces

Maryam



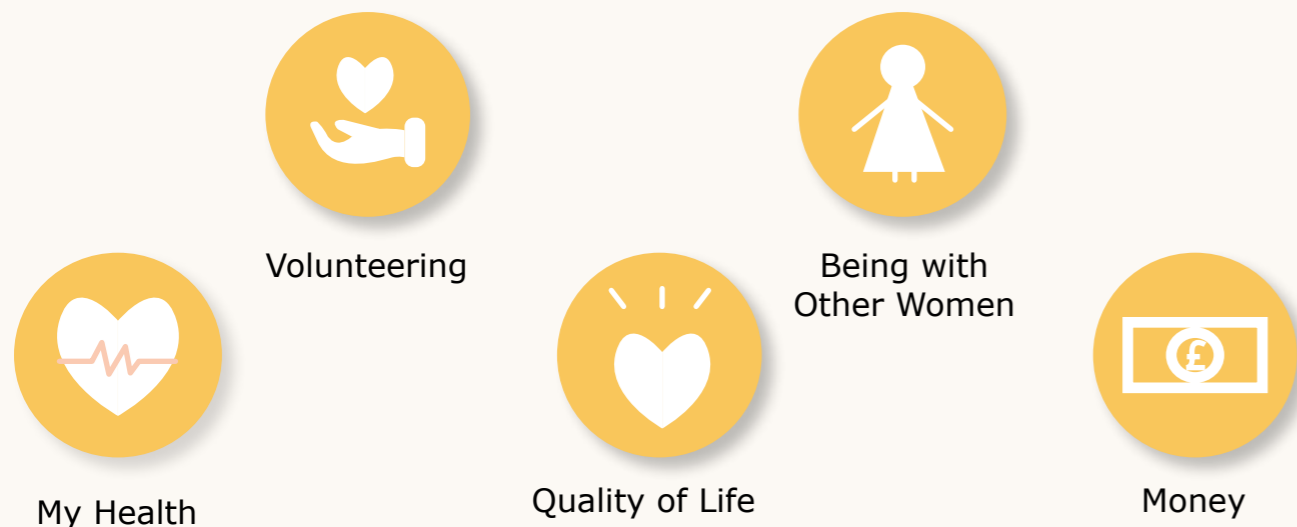
Age: 40

Location: Central Eccles

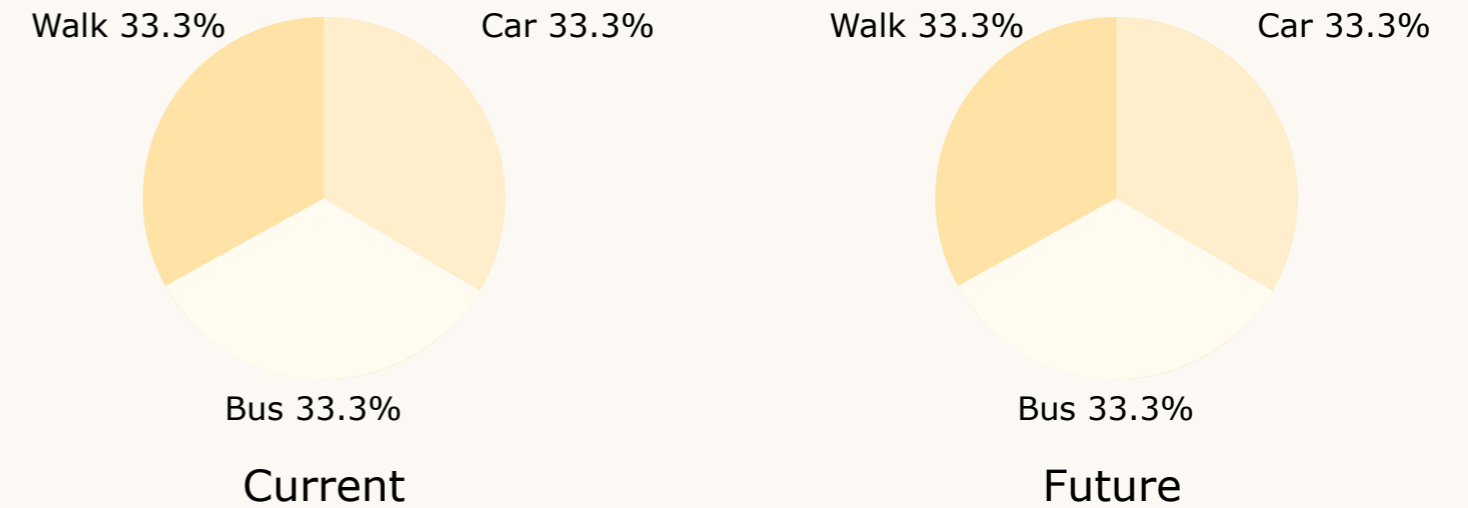
A bit about me:

- I am divorced.
- I live with my children.
- I often feel lonely.
- I am stressed.
- I struggle with finances.
- I would like to cook more with fresh ingredients.

What Matters the Most to Me:



Transport I Use and Would Like to Use



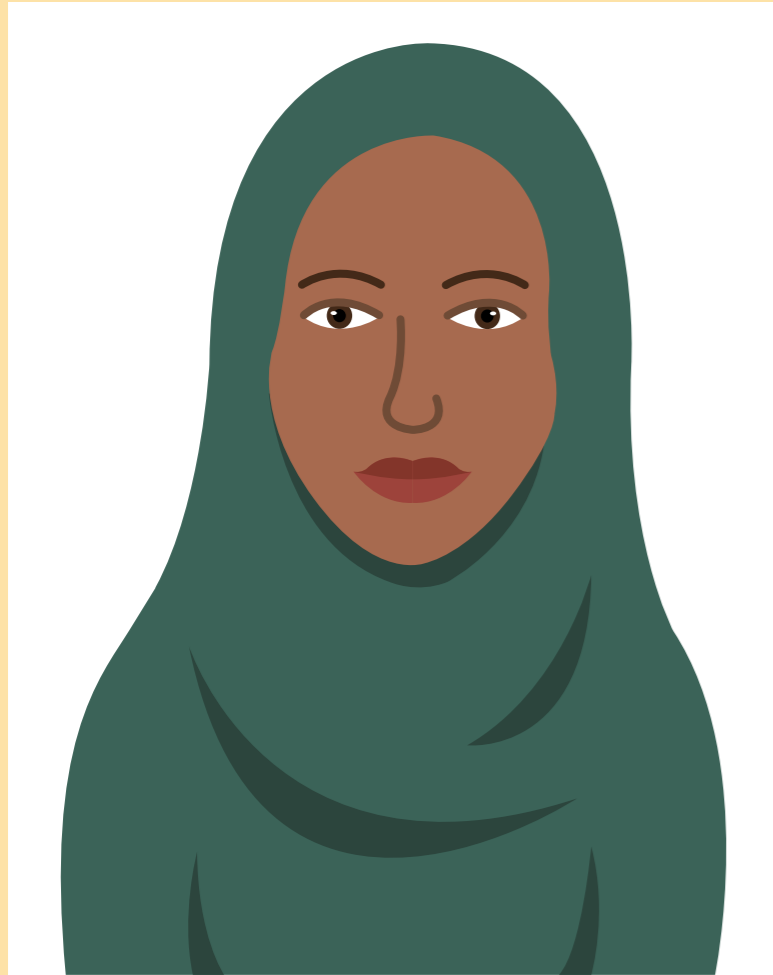
Barriers I Face with the Town Centre



My Hopes for the Future



Sara



Age: 30

Location: Central Eccles

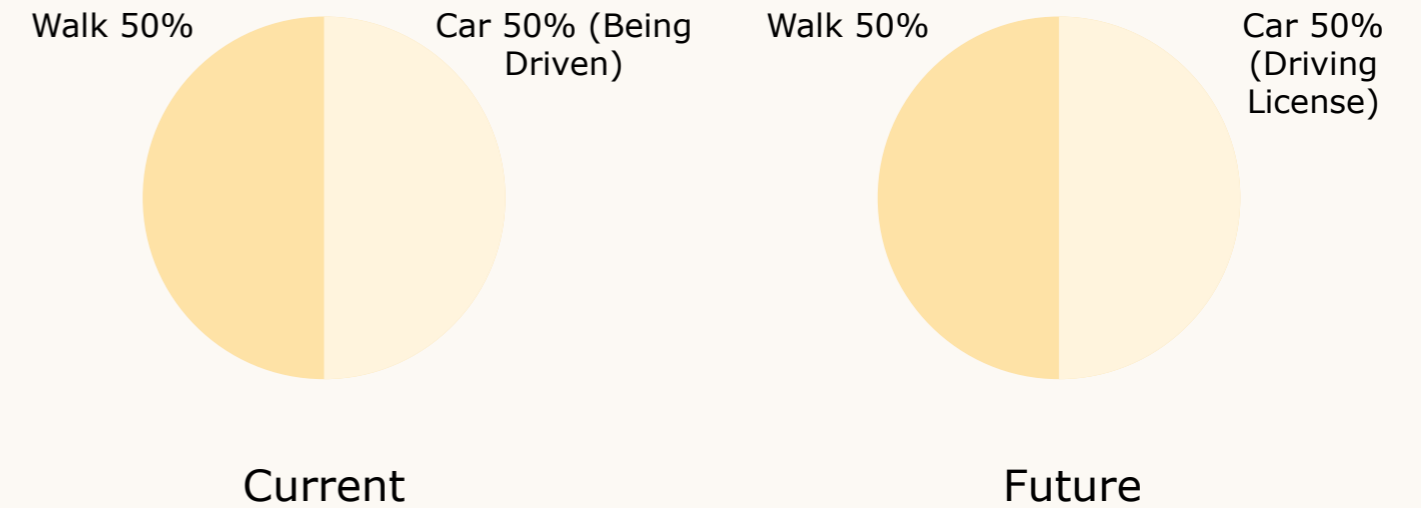
A bit about me:

- I am a house wife.
- My husband works.
- I am strong.
- I have strong aspirations and want to self improve.

What Matters the Most to Me:



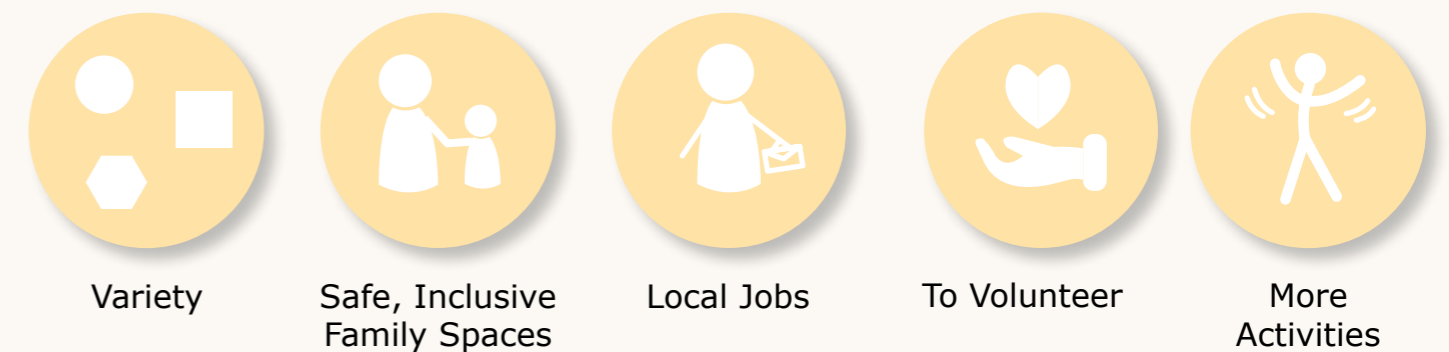
Transport I Use and Would Like to Use



Barriers I Face with the Town Centre



My Hopes for the Future



Khalid



Age: 6

Location: Central Eccles

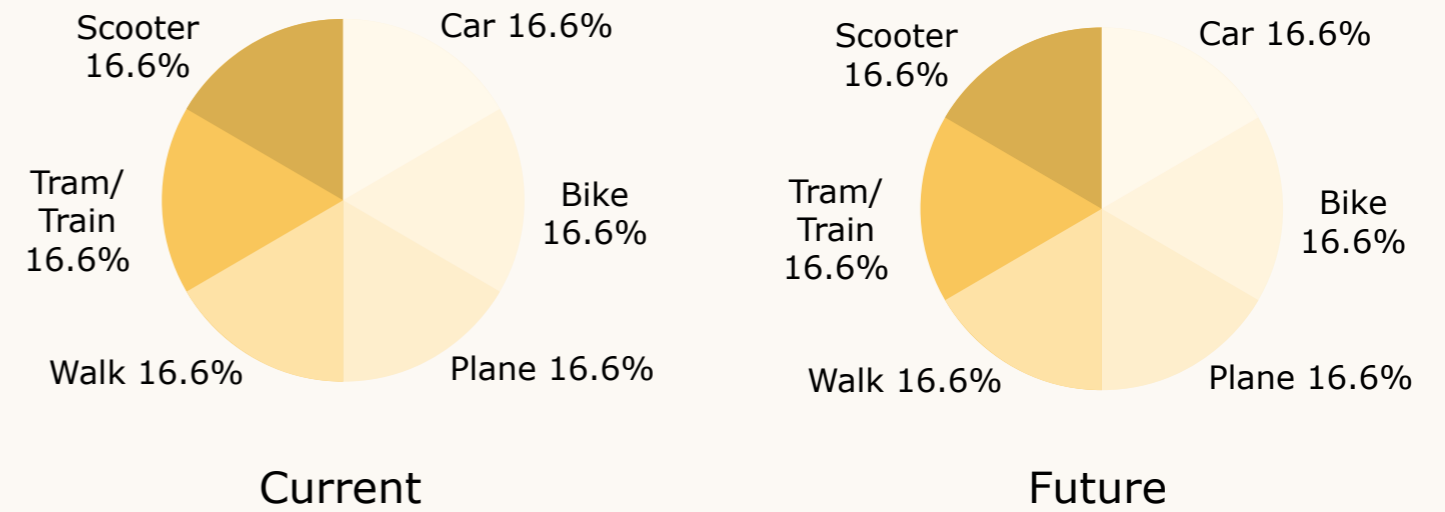
A bit about me:

- I am high energy person.
- I like Spider-Man.
- I am multilingual.
- I like football and my playstation.
- My family is from a professional class background.

What Matters the Most to Me:



Transport I Use and Would Like to Use



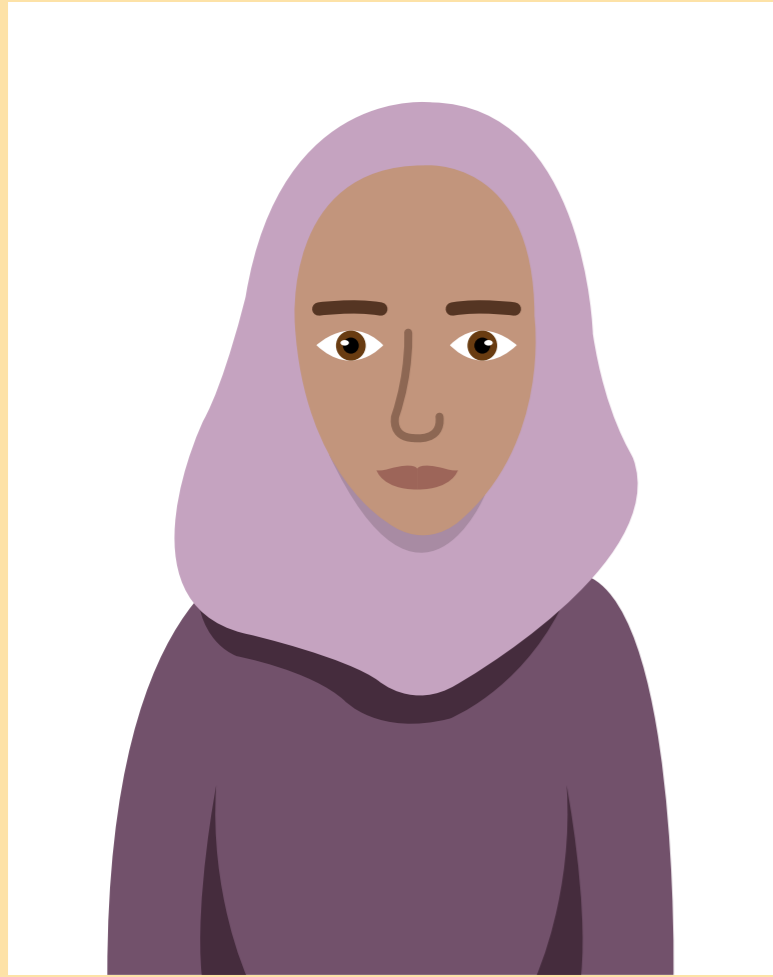
Barriers I Face with the Town Centre



My Hopes for the Future



Aisha



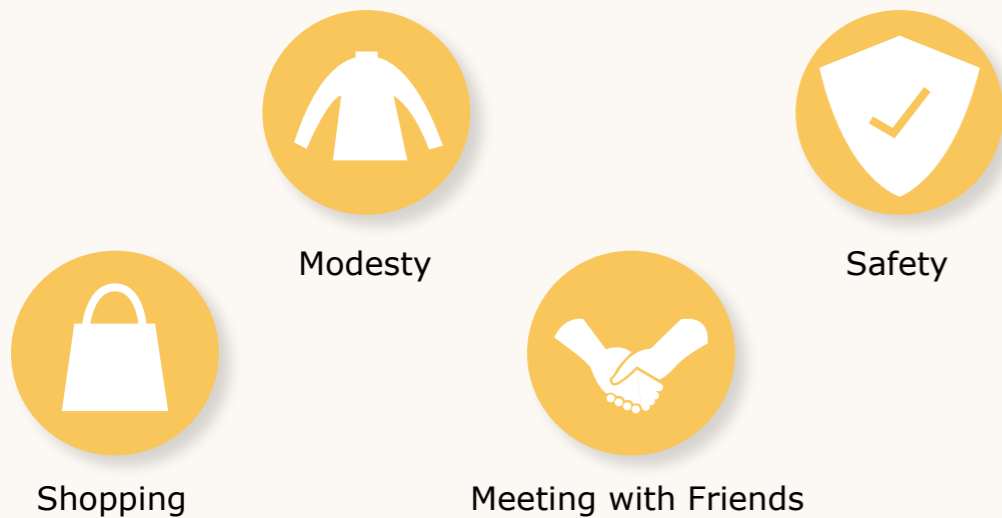
Age: 14

Location: Central Eccles

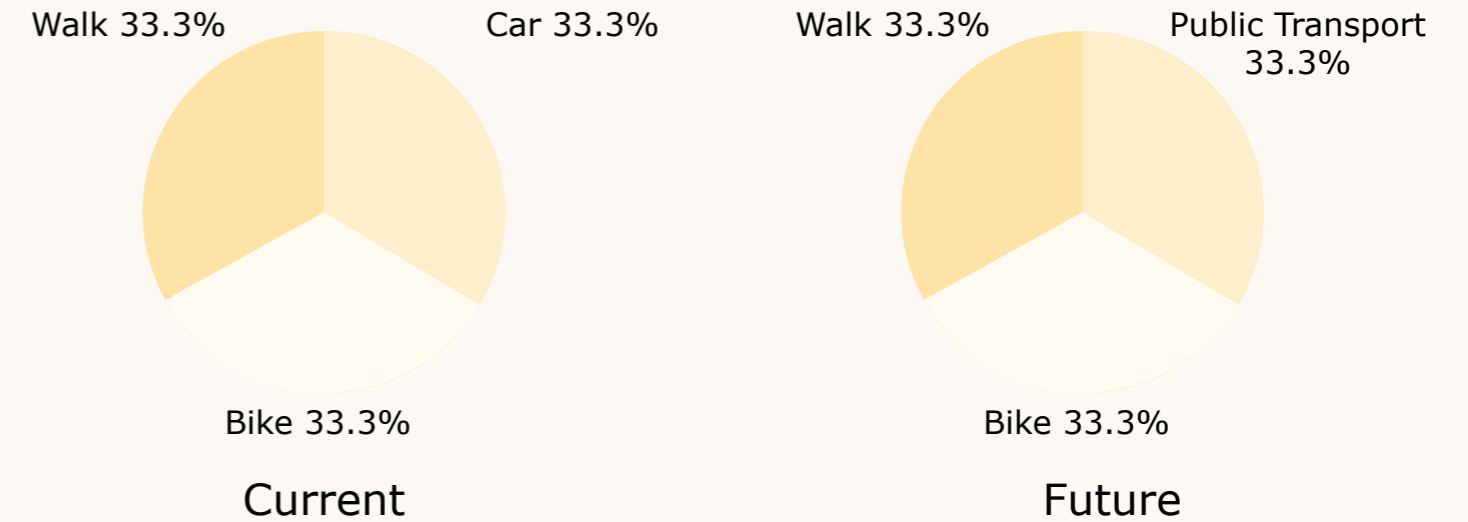
A bit about me:

- I am a shy/ quiet person.
- I do well in school.
- I am not involved in sports at school but, I would like to be.
- I like to eat out .

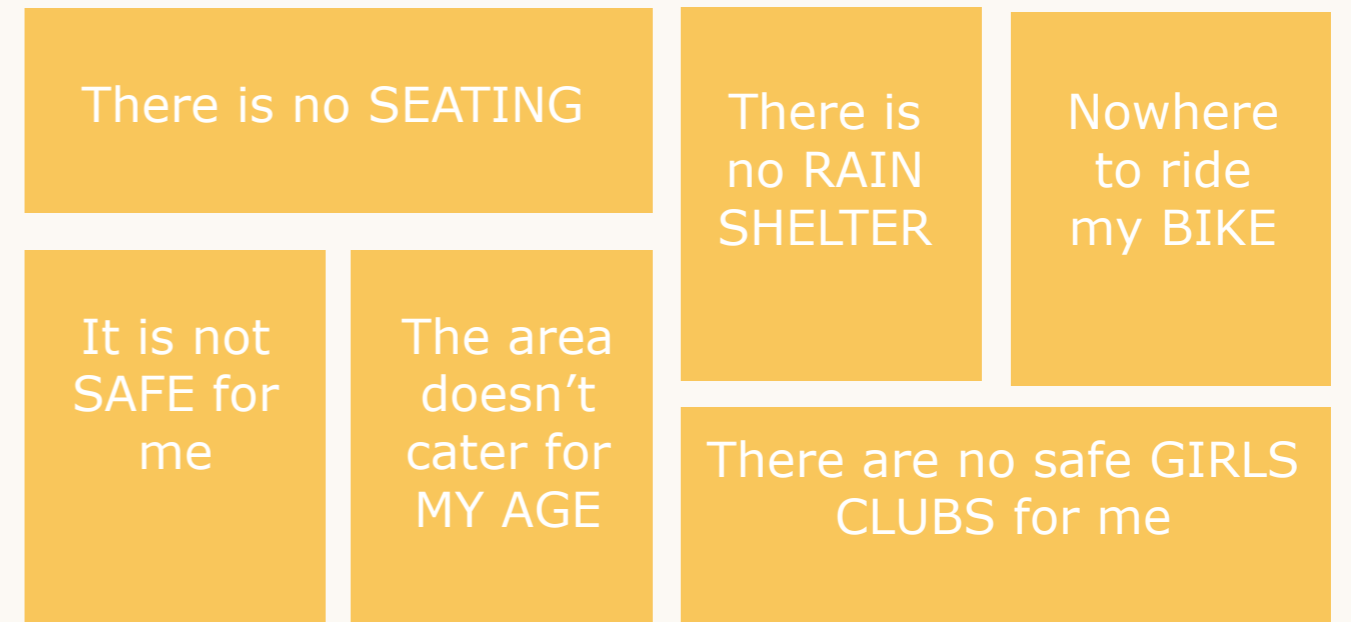
What Matters the Most to Me:



Transport I Use and Would Like to Use



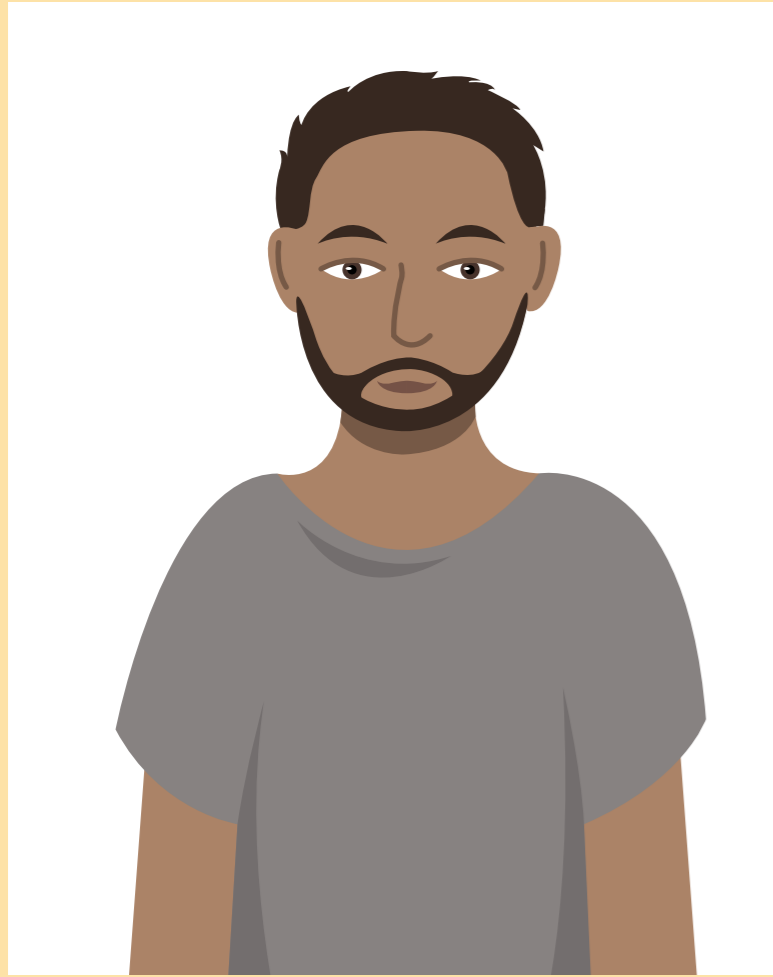
Barriers I Face with the Town Centre



My Hopes for the Future



Omar



Age: 43

Location: Central Eccles

A bit about me:

- I am employed.
- I have children.
- I enjoy social gatherings.
- I have a stable home.
- I drive a car.

What Matters the Most to Me:



My Family



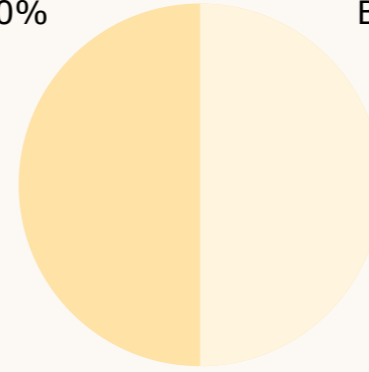
Safety



Social Gatherings

Transport I Use and Would Like to Use

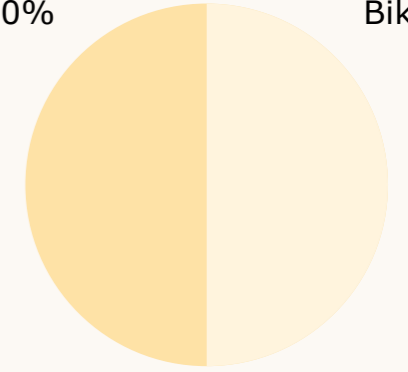
Car 50%



Current

Bike 50%

Car 50%



Future

Bike 50%

Barriers I Face with the Town Centre

It is not SAFE for me

There is nothing TO DO there

I don't feel WELCOME there

My Hopes for the Future



Affordability

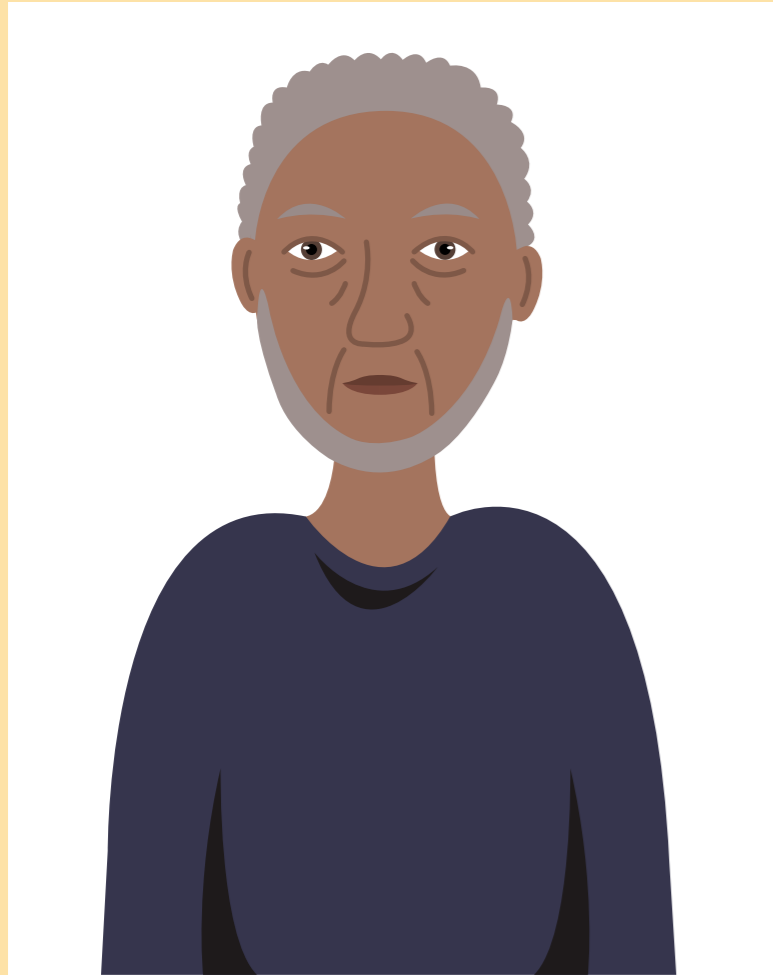


Something to do with the Kids



Safety

Mohammed



Age: 70 (estimated)

Location: Central Eccles

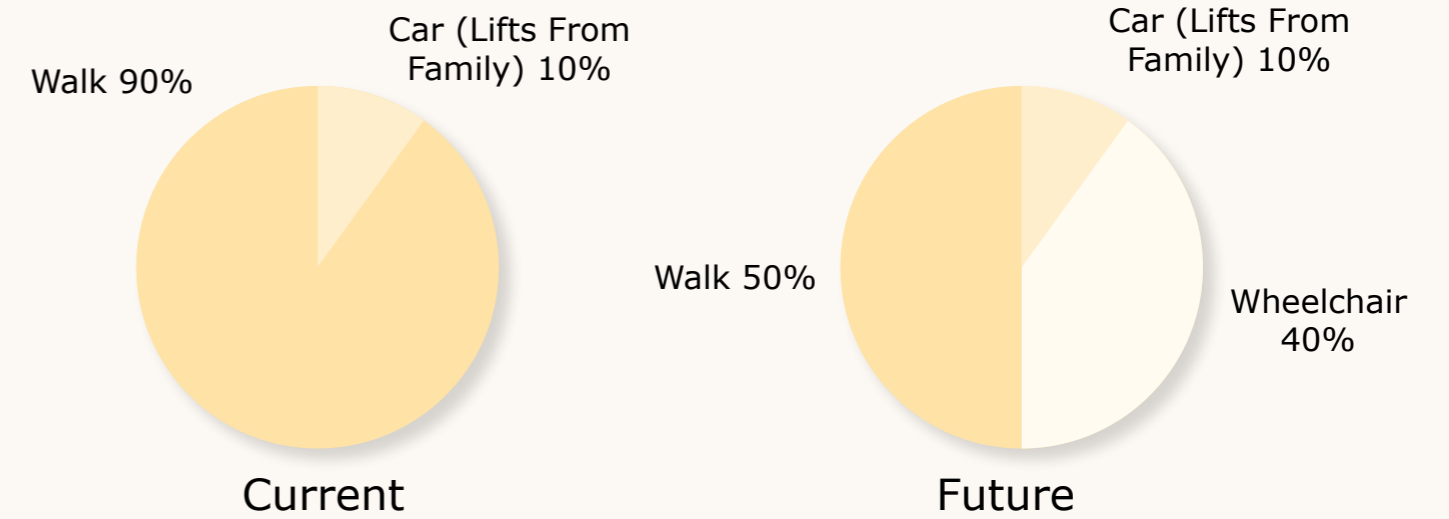
A bit about me:

- From Yemen.
- I visit the Mosque regularly.
- I speak little English.
- I am a retired factory worker.
- I like traditional values.
- I am well respected.
- I am proud.

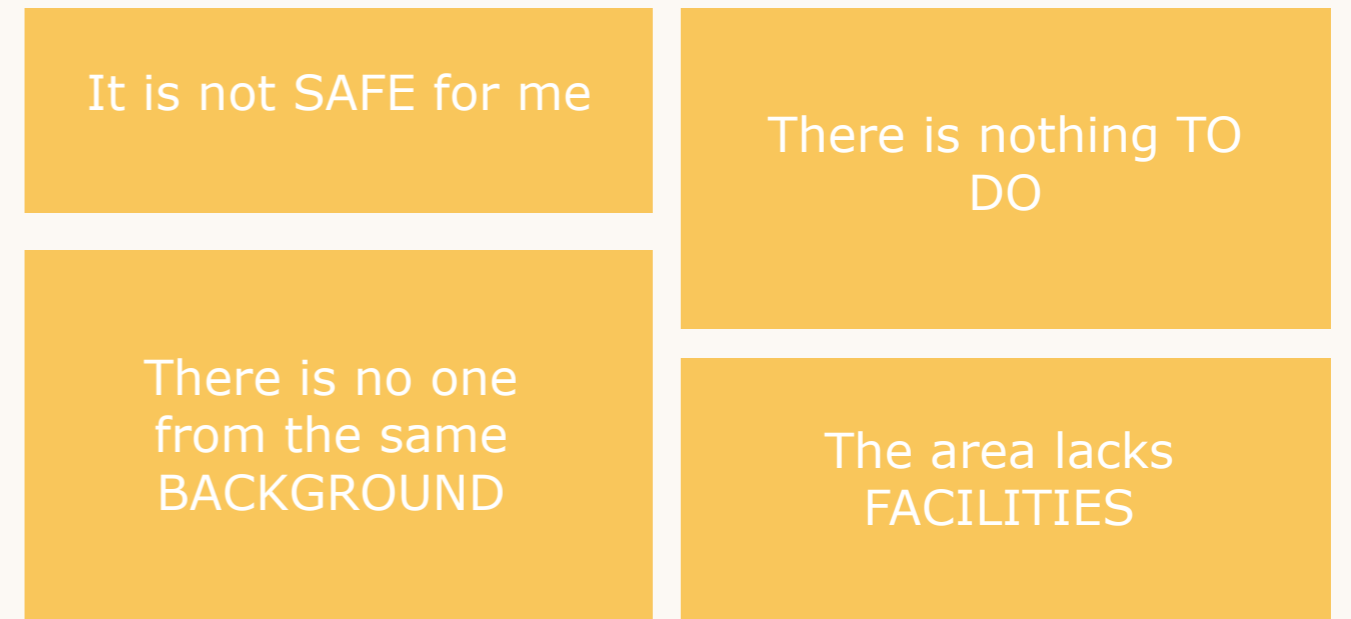
What Matters Most to Me:



Transport I Use and Would Like to Use



Barriers I Face with the Town Centre



My Hopes for the Future



The Problems

A Summary of Each Group's
Barriers/ Frustrations Regarding
their Respective Town Centres

The Older Women's Group

- Environment
- Safety
- Diversity
- Socialisation
- Shelter
- Accessibility



3. Not Safe



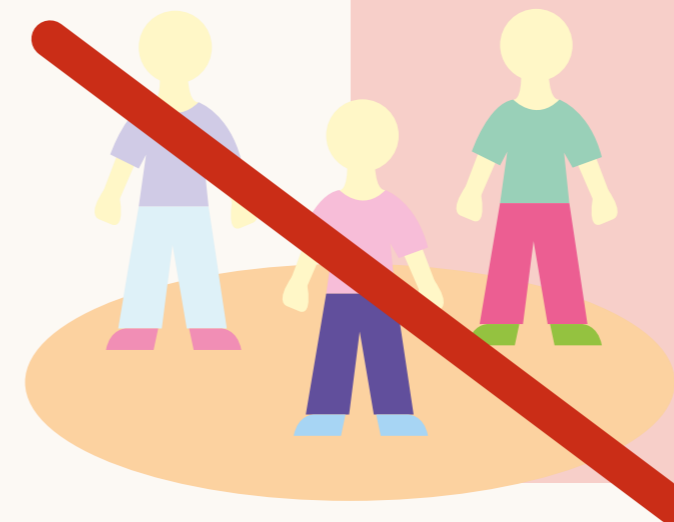
1. Bad Weather



4. Dirty and Depressing



2. Lack of Variety



5. Nowhere to Socialise



Young People Group

- Environment
- Safety
- Diversity
- Socialisation
- Shelter
- Accessibility



1. No Local Work



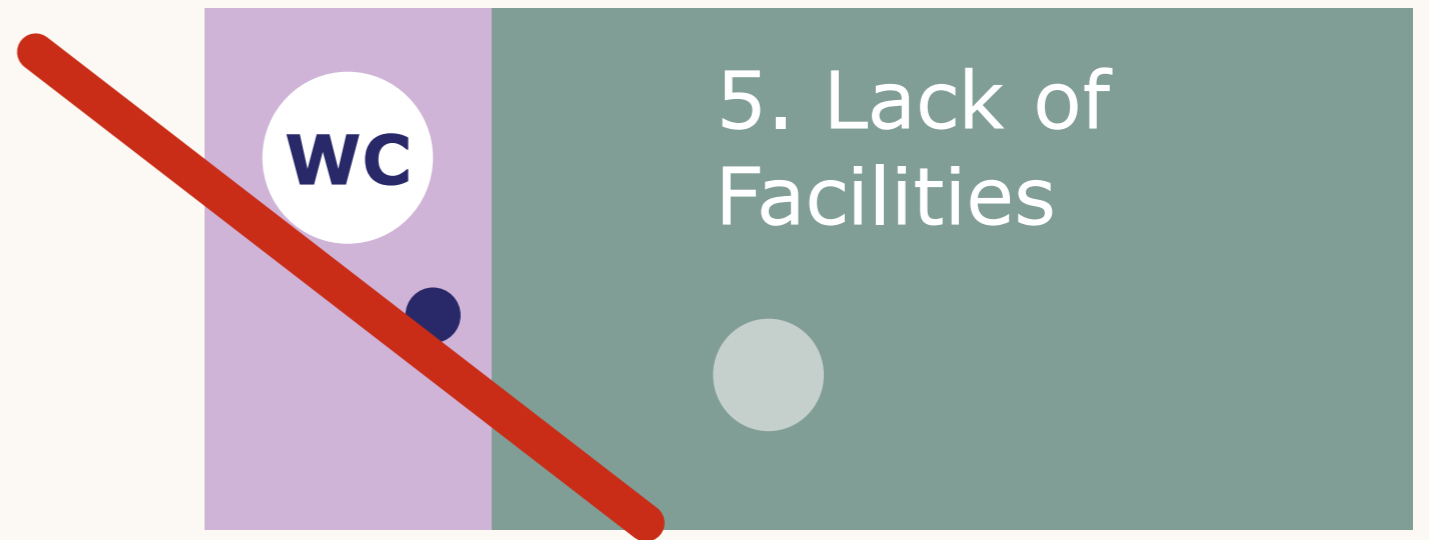
2. Nothing To Do



3. Not Safe



4. Too Much Traffic

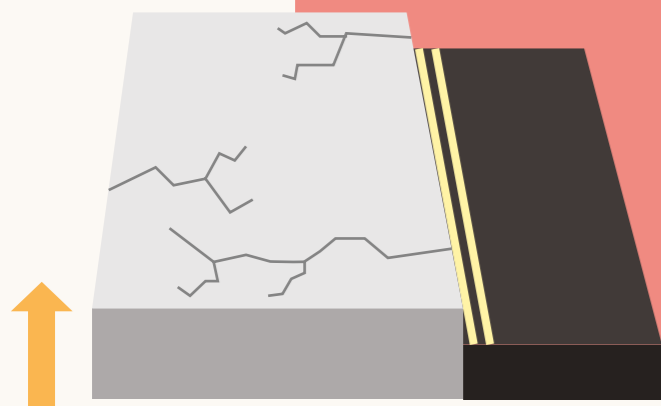


5. Lack of Facilities

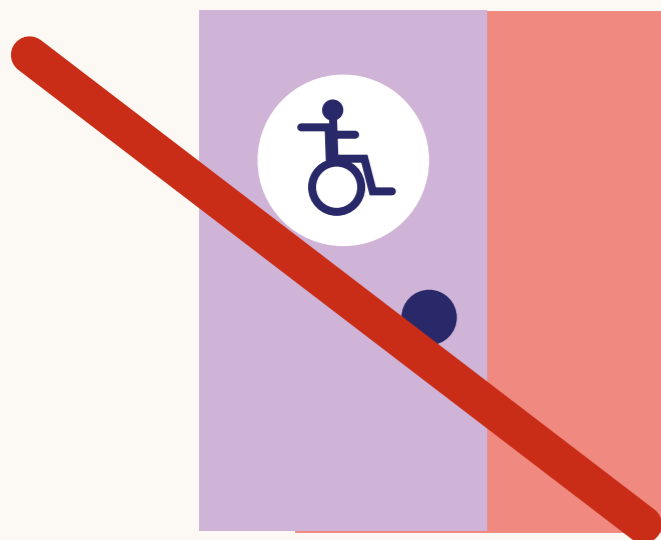
Disabled Adults Group

- Environment
- Safety
- Diversity
- Socialisation
- Shelter
- Accessibility

1. Bad Pavements



2. No Truly Accessible Toilets



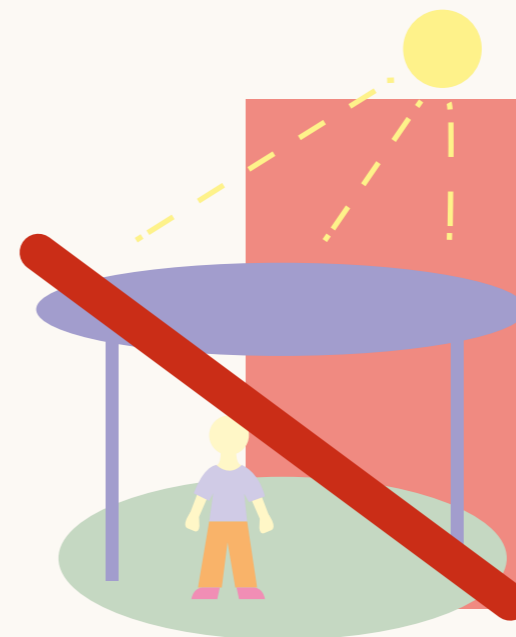
3. No Accessible Drop Off/ pick Up Point



4. Overgrown Plants




5. No Shade



The Yemeni Group

- Environment
- Safety
- Diversity
- Socialisation
- Shelter
- Accessibility



1. No Seating

Accessibility




2. Lack of Varied Activities

Socialisation



3. Not Safe

Safety



4. No Shelter

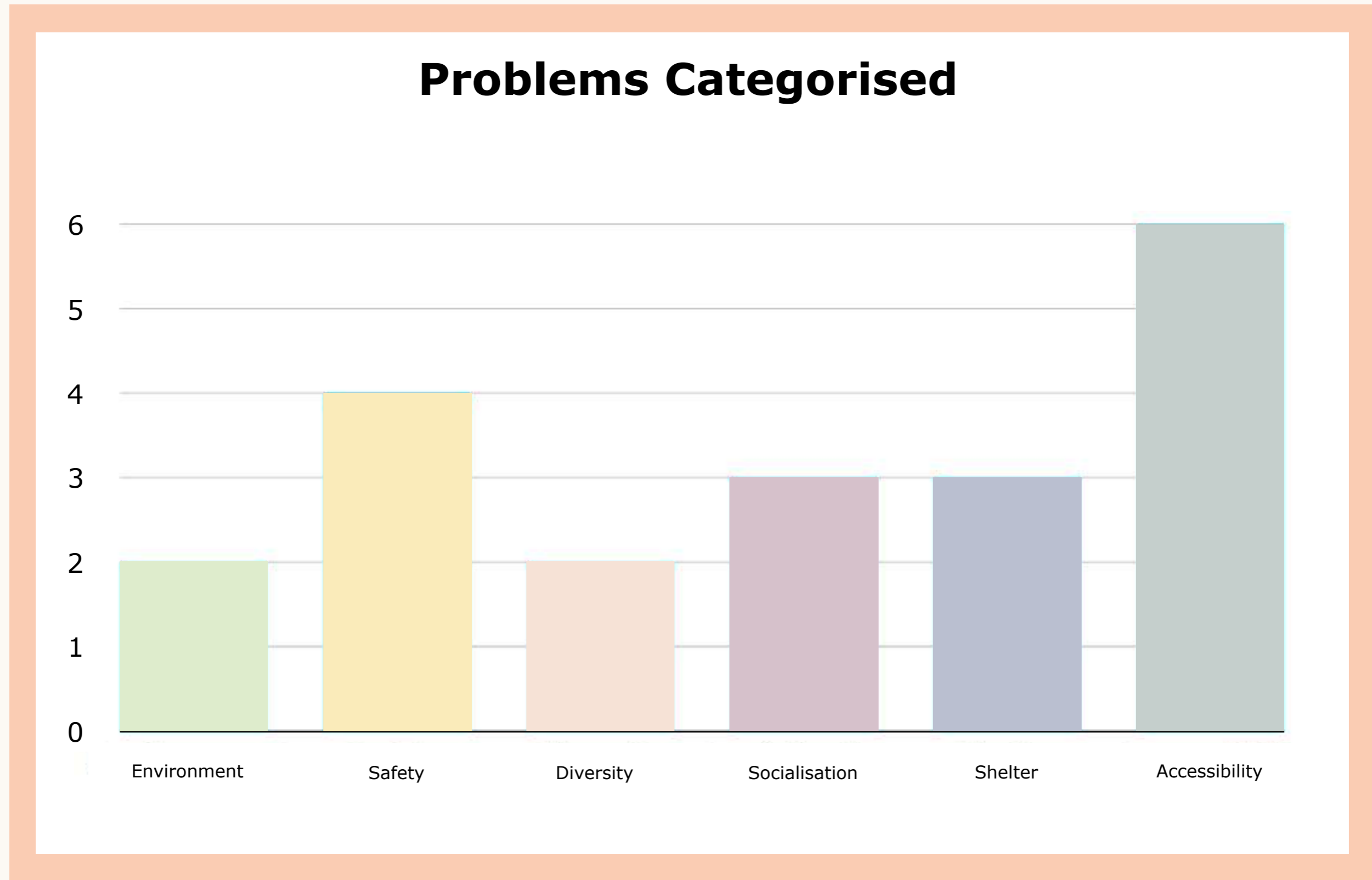
Shelter



5. No One from the Same Background

Diversity

Problem Summary



The Solution

A Series of Themed Strategies
Based on the Groups' Feedback
That Can be Implemented to Make
a More Inclusive Town Centre

The Themes

Green Spaces

Safety

Diversity

Meeting Spaces

Shelter

Accessibility

Green Spaces



Biodiverse



Spacious

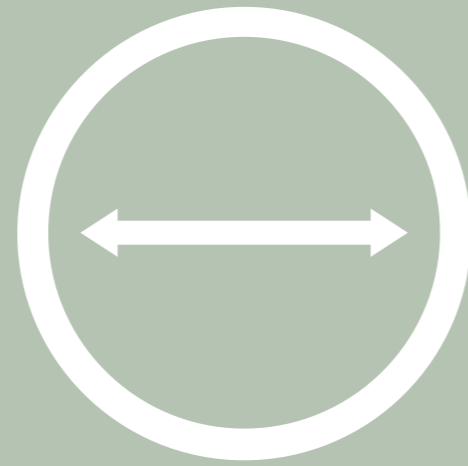


Multi-use

Green Spaces: Key Points

1. Spacious

We want more spacious green spaces that can accommodate large groups of people for gatherings and events.



3. Multi-use

We want green spaces that offer a diverse range of activities for all that can be flexibly adapted to suit different events and gatherings .



2. Biodiverse

We want green spaces that feature a diverse range of flora and fauna to attract more diverse wildlife to the area, thus making it more sustainable.



4. Maintained

We want our green spaces to be maintained so that everyone can enjoy them for generations to come.



Safety



Pedestrian



Diversity



Belonging



Family Friendly

Safety: Key Points

1. Pedestrianised

We want a town centre that places importance on the pedestrian by offering more pedestrian only zones to allow people to walk freely safely.



3. Family Friendly

We want places with a diverse range of family friendly activities all around the town centre to promote a family friendly atmosphere.



2. Diversity

We want more fully inclusive and diverse spaces to be added to the town centre to make people of all backgrounds feel safe to be themselves.



4. Refuge Spaces

We want more refuge spaces within our town centre, away from main walkways or crowded areas, where people can sit to relax and recuperate.



Diversity



Culture



Food

Variety



Diversity: Key Points

1. Community

We want a community hub with accessible facilities acting as a base for people and a meeting space where people can share skills and get advice.



3. Accessibility

We want places that offer a constant diverse range of goods and services from all around the world, catering to different demographics.



2. Multi-use

We want spaces in the town centre to be mixed use offering a variety of activities for all. For example, a cafe that serves as an art exhibition space and an event space.



4. Local

We want a bigger focus on local businesses within our local community to accurately represent us as a community.



Meeting Spaces

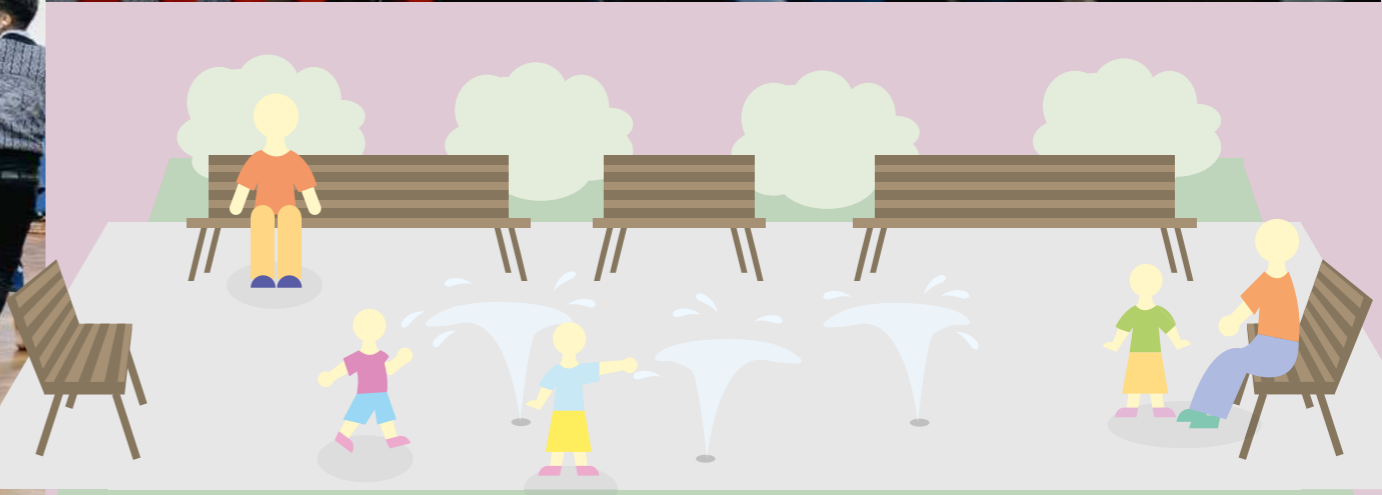
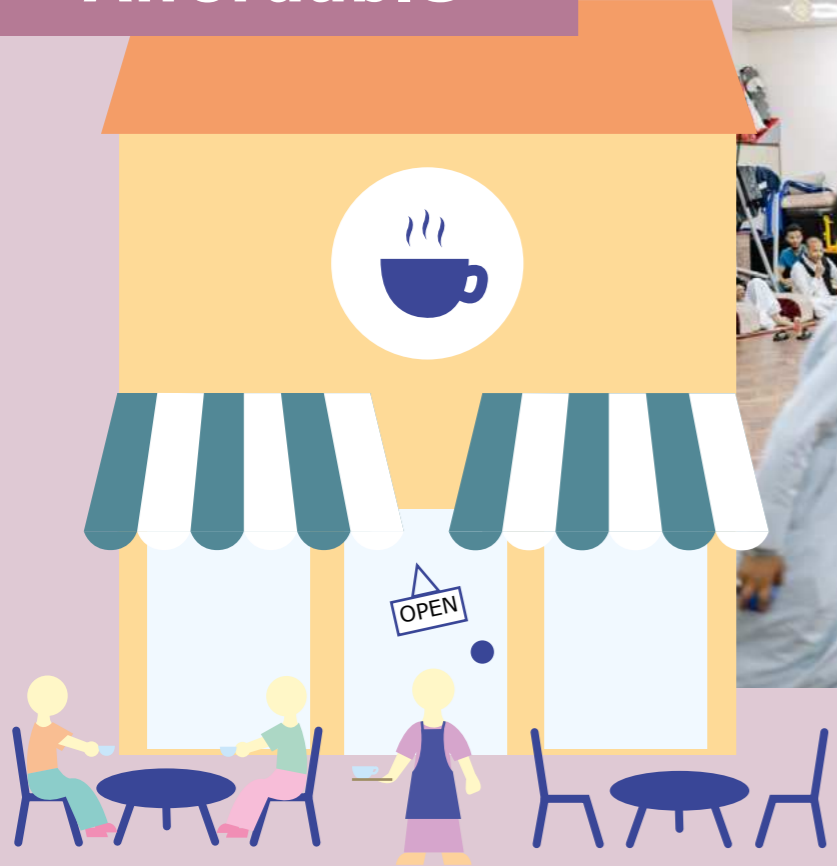
Inclusive



Affordable



Safe



Multi-Use

Meeting Spaces: Key Points

1. Affordable

We want realistic meeting spaces that are affordable for all so that everyone can have the opportunity to socialise regardless of background.



3. Multi-Use

We want spaces that can be used to host a variety of activities to maintain the community spirit.



2. Inclusive

We want our meeting spaces to be inclusive for all. This includes making doors automatic and having fully inclusive facilities such as having Changing Places toilets alongside regular toilets.



4. Safe

We want our meeting spaces to be safe for all through multi use, being easily accessible and being inclusive to all.



Shelter



Safe



Shade



Flexible



Shelter: Key Points

1. Varied

We want a variety of different sheltered areas in the town centre to protect us from all forms of weather.



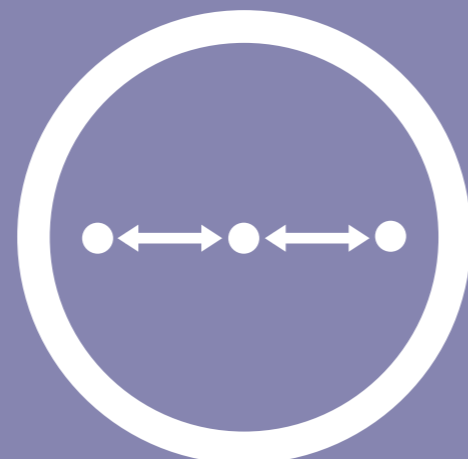
3. Multi-use

We want sheltered areas that can be used year long to host a range of activities for all.



2. Regular

We want shelter that is prominent in the town centre and that is not limited to a particular area.



4. Safe

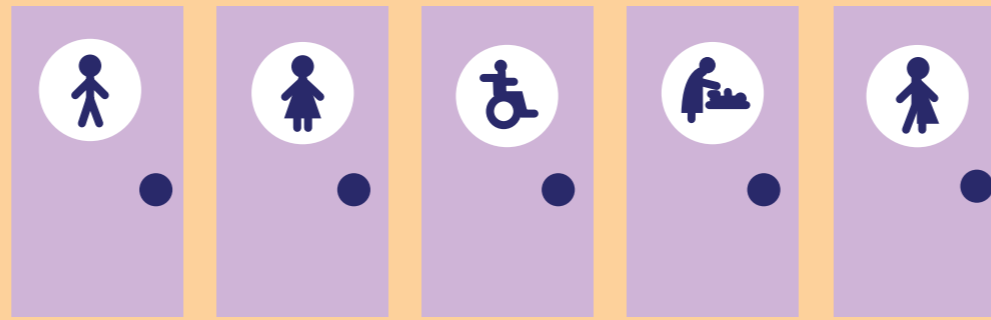
We want to be safe so that people from all backgrounds can come and feel comfortable in the town centre.



Accessibility

Facilities

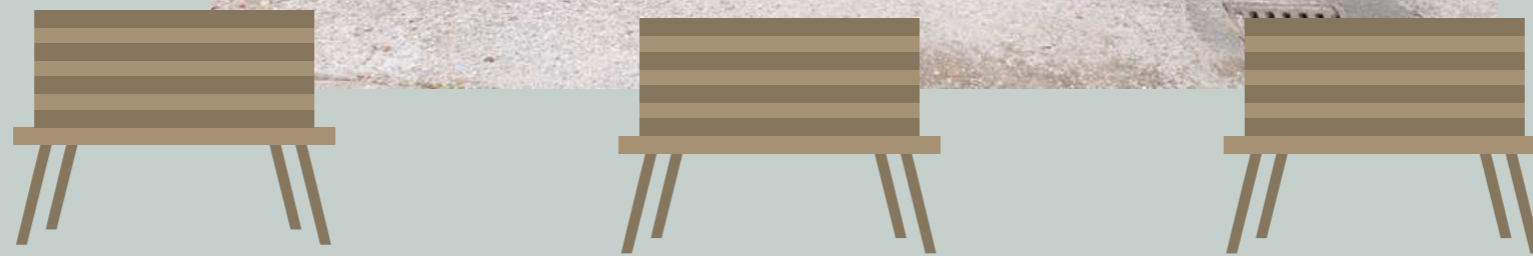
Toilets / مراحيض / Aseos



Local Jobs

Seating

Space



Accessibility: Key Points

1. Seating

We want a variety of seating all throughout to accommodate large groups and individuals such as longer benches, single seating and outdoor tables and chairs.



3. Facilities

We want well maintained, regular facilities that are fully inclusive for all and accessible in multiple languages. This includes offering Changing Places toilets alongside regular toilets.



2. Paving

We want flatter and wider pavements that are well maintained over time and that are not too high.



4. Jobs

We want more spaces within the town centre that can offer a diverse range of local jobs. This includes supporting self-employment within the community by allocating spaces for start ups.



Case Studies

A Series of Town Centres
That Showcase the Same
Themes

1. Rybnik

Location: Poland

Information:

- It is a former mining industrial town in the south of Poland.
- With the help of EU funded projects it was able to modernize itself after the fall of communism.
- Is frequently used as a filming location.

Qualities in Relation to Themes:

- Pedestrian friendly town centre.
- Mixed use buildings.
- Open town squares that are multi use.
- Shaded seating areas.
- Variety of different seating.
- Features a large park with free activities.
- Is accessible.



Photo: ARM-RK



Photo:[source]-<https://krainagornejodry.slaskie.travel/news/1020369/gdzie-na-jesienny-spacer>

Video: <https://www.youtube.com/watch?v=wwoyvBFpcE>

Video by: Drone 360



Photo: ARM-RK



Photo: Dominik Gajda



Photo:[source]-<https://www.rybnik.eu/en/>

2. Pyramid of Tirana

Location: Tirana, Albania

Information:

- Was originally built to be a museum for the communist dictator, Enver Hoxha.
- Was renovated in 2023 by MVRDV, an architectural practice from The Netherlands
- The building now houses cafés, studios, workshops and a non profit organisation.

Qualities in Relation to Themes:

- Pedestrian friendly surroundings.
- Mixed use building.
- Houses local start ups and charities.
- Shaded areas on the ground.
- Variety of different seating.
- Large park surrounding it.
- Well maintained.



Photo: © Ossip van Duivenbode

More information: <https://www.mvrdv.com/projects/312/the-pyramid-of-tirana>



Photo: © Ossip van Duivenbode



Photo: © Ossip van Duivenbode



Photo: © Ossip van Duivenbode



Photo: © Ossip van Duivenbode

3. Groningen

Location: The Netherlands

Information:

- Located in the north of The Netherlands, it is the healthiest city in The Netherlands according to De Gezonde Stad Index 2022.
- The main centre of the city was completely destroyed during the battle of Groningen between 13-16th April 1945 where around 270 buildings were destroyed.
- Groningen has ranked 3rd out of 83 towns and cities in a recent European Commission study on quality of life.

Qualities in Relation to Themes:

- Very pedestrian and cycling friendly.
- Flat Terrain.
- It has shaded areas.
- Lots of seating.
- Hosts different activities and events.
- Different mixed use buildings and spaces.

More information: <https://www.holland.com/global/tourism/discover-the-netherlands/visit-the-cities/groningen>



Photo [source]: <https://www.visitgroningen.nl/en/locations/city>



Photo: Prinsenhof



Photo: © Stella Dekker via Marketing Groningen



Photo: © Stella Dekker via Marketing Groningen



Photo: © Stella Dekker

4. Brooklyn Regeneration

Location: Brooklyn, USA

Information:

- The scheme will span from Columbus park to the Barclay's Centre in downtown Brooklyn and will aim to improve the pedestrian experience.
- It is designed by BIG Architects and WXY Studio.
- The project will see several streets "demapped" for pedestrian use only.

Qualities in Relation to Themes:

- Fully Pedestrianised.
- Lots of different seating.
- Different activities.
- Mostly flat and well maintained.
- Shaded areas.
- Family Friendly spaces.
- Large green spaces.



Image: BIG Architects and WXY Studio

More information: <https://www.dezeen.com/2020/01/07/big-wxy-plan-downtown-brooklyn/>



Image:[source]-<https://www.dezeen.com/2020/01/07/big-wxy-plan-downtown-brooklyn/>



Image: BIG Architects and WXY Studio



Image: BIG Architects and WXY Studio



Image:[source]-<https://www.dezeen.com/2020/01/07/big-wxy-plan-downtown-brooklyn/>

5. Zwolle Second Centre

Location: Zwolle, The Netherlands

Information:

- The area is a former industrial site.
- The main warehouse, Wärtsilä hall, will be renovated to house a museum, shops, start ups and educational facilities.
- It is designed by MVRDV, LOLA Landscape Architects and Orange Architects.

Qualities in Relation to Themes:

- Fully Pedestrianised.
- Lots of different seating.
- Different activities
- Lots of meeting spaces.
- Shaded areas.
- Lots of biodiversity.
- Large green spaces.



Image: MVRDV Architects

More information: <https://www.dezeen.com/2024/01/11/mvrdv-wartz-district-zwolle-netherlands/>



Image: MVRDV Architects



Image: MVRDV Architects



Image: MVRDV Architects



Image: MVRDV Architects

6. Green Community Centre

Location: London, UK

Information:

- The building is located in the London borough of Southwark.
- It replaces the site of two 1970s council buildings.
- It is a multi use space that consists of a cafe, foyer and a meeting/performance space.
- It hosts different activities and is run by The Nunhead Voice, a charity run by volunteers.
- It has received a BREEAM Excellent rating for its sustainability.

Qualities in Relation to Themes:

- Built for the community.
- Affordable meeting space.
- A mixed use space.
- It contains outside shelter.
- It is a welcoming place for all.

More information: <https://www.dezeen.com/2016/02/13/the-green-community-centre-aoc-architecture-london-herringbone>

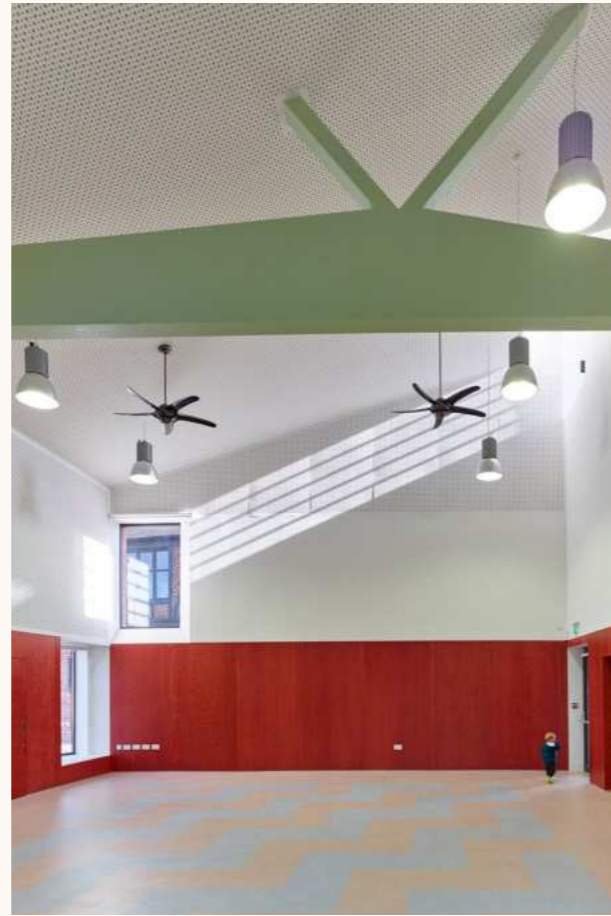


Photo: Tim Soar



Photo: Tim Soar



Photo: Tim Soar



Photo: Tim Soar



Photo: Tim Soar

7. Syn Trofi & Bolton Market

Business Models

Location: Rethymno, Crete, Greece

Information:

- Syn Trofi is a "co-operative" restaurant in Crete, co-owned and run by the local youth. There is no manager and everyone is involved in decision making.
- It uses local produce in the area to make their dishes.
- This particular part of Greece has high youth unemployment rates so in 2013 the locals decided to set up these kind of "co-operatives" in the area to help out the local economy and to bring people together.

Qualities in Relation to Themes:

- Co-owned by locals.
- Uses local produce.
- Indoor space.
- It is Flat.
- It is a community meeting space.



Photo: Gilles T

More information: https://www.tripadvisor.co.uk/Restaurant_Review-g189421-d8435936-Reviews-Sin_trofi-Rethymnon_Rethymnon_Prefecture_Crete.html



Photo: Roy R



Photo: Roy R

Location: Bolton, UK

Information:

- Bolton market is located in Bolton, in the north west of England.
- It has been awarded the NABMA (National Association of British Market Authorities) Market Innovation of the Year 2015 award.
- The market hall dates back to 1855 when it was housed in the historic Bolton Market Hall. The hall now houses a shopping centre.
- The market is open on Tuesdays, Thursdays, Fridays and Saturdays from 9am to 5pm.

Qualities in Relation to Themes:

- Uses local businesses.
- It is an indoor space.
- Has lots of different seating.
- It is flat and accessible.
- It is an affordable meeting space.

More information: <https://www.dezeen.com/2020/01/07/big-wxy-plan-downtown-brooklyn/>



Photo [source]: <https://www.boltonmarkets.com/>



Photo [source]: <https://www.boltonmarkets.com/>



Photo [source]: <https://www.boltonmarkets.com/>

8. Appletree Court

Location: Salford, UK

Information:

- Appletree court, located in Pendleton, Salford, was a block of flat development that was transformed through the urban oasis project in the 1990s.
- In the 1990s, inspired by the vernacular high rise architecture of Yemen, the residents started a self help project creating vegetable patches, gardens and even a community cafe in the grounds of the apartment block.
- The gardens were catered to the needs of the residents and were run by volunteers which helped maintain community spirit.

Qualities in Relation to Themes:

- Encouraged high community spirit.
- High diversity of plants and wildlife.
- Run by the local community.
- Was used as a meeting space.
- Family friendly, safe space.

More information: <https://www.davidthorpe.info/parkhistory/applecourt.html>



Photo: Hunt Emerson



Photo: Hunt Emerson



Photo: Hunt Emerson



Photo: Martin Bond

Conclusion

Overall, we want a warm, family-friendly, pedestrianised town centre that brings in a diverse range of well maintained mixed use spaces, both built and green, that are adapted to the UK climate. These spaces will bring in diversity, accessibility and safety to the town centre and will showcase the community spirit and talent.

All of these themed strategies will help to create a warm and inviting atmosphere for all and will help the town centre thrive for generations to come.

